

LOS ANGELES WATER & POWER

**EMPLOYEES'**

# ASSOCIATION REPORT

JUNE 2014



**WAYS TO  
BEAT THE HEAT**

WATER PARK TICKETS  
NOW AVAILABLE

**LADWP  
DONORS' WELFARE PLAN  
TALENT SHOW  
HIGHLIGHTS**

PHOTOS INSIDE

# Do You Love Your WPCCU Auto Loan?

Share your story in our Love Your WPCCU Auto Loan Sweepstakes!

You might just win a Disneyland® family four-pack on us!

Details at [Facebook.com/wpccu](https://www.facebook.com/wpccu) or [wpcu.org](http://wpcu.org).



## One winner will be chosen to win a Disneyland® family four-pack on us!

Enter for your chance to win by capturing why you love your WPCCU auto loan in a short, fun essay. Your story may be selected and featured in future campaign promotions. Visit [wpcu.org](http://wpcu.org) and complete the "Why You Love Your WPCCU Auto Loan" entry form, print it out and bring it into any branch or enter at [Facebook.com/wpccu](https://www.facebook.com/wpccu).

**Stop by a branch or call 800-300-9728 and ask a member service representative how you can start your auto loan process today.**

**\$200 CASH REBATE**  
when you finance a new or used vehicle in branch today!

Victoria O. from Los Angeles got an auto loan from WPCCU. This is what she had to say about why she loves her auto loan.



“This was the best car-buying experience I've ever had! I will definitely do all future vehicle purchasing here. Thank you!”

800-300-9728 • [wpcu.org](http://wpcu.org)

Offer may end at any time and is not available for refinancing existing WPCCU auto loans. Auto loans at WPCCU require membership in the credit union (one-time membership fee is waived for LADWP employees and their families), and a minimum of \$25 in the member's primary savings account. \$200 rebate is for WPCCU auto loans financed in-branch and is redeemed at the time of loan funding. Loan subject to credit approval and restrictions apply. The credit union will not finance cars that are older than five years and/or that have more than 100,000 miles.

# TABLE OF CONTENTS

**3** **KNOW YOUR EMPLOYEES' ASSOCIATION**  
FINANCIAL ASSISTANCE PROGRAMS

**4** **DONORS' WELFARE PLAN**  
OASIS WOMEN'S RECOVERING COMMUNITY

**6** **SPOTLIGHT**  
WAYS TO BEAT THE HEAT

**8** **LADWP MERCHANDISE**

**10** **TICKETS**

**18** **ON THE COVER**  
LADWP DONORS' WELFARE PLAN  
TALENT SHOW HIGHLIGHTS

**22** **RECIPES**

**24** **FACTS & FIGURES**

**26** **ASSOCIATION SERVICES**

**32** **THE CLASSIFIEDS**  
BUY, SELL, TRADE

**36** **FUN & GAMES**

**MONDAY,  
JUNE 30, 2014**

The Employees' Association Office hours will be 8:00 a.m. - 1:00 p.m.

**WEDNESDAY,  
JULY 9, 2014**

The Employees' Association Office will close from 11:30 a.m. - 1:00 p.m.



## LADWP EMPLOYEES' ASSOCIATION REPORT

A publication of your Los Angeles Water and Power Employees' Association

Jacquie Mendez Editor  
Eric Botero Graphic Designer

### Services Committee

Shirley Brown, Fernando De La Luz, Gale Harris, Jacquie Mendez, Willie Tam, Debra Turner

### Employees' Association

General Information	(213) 367-3146
Association Report	(213) 367-3144
Ticket Office	(213) 367-3142
Donors' Welfare Plan	(213) 367-3142
Assistance Loans	(213) 367-3163
Medical Equipment	(213) 367-3163
Mutual Benefit Plan	(213) 367-3143
Safety Shoes	(213) 367-3163

### Notary Services

Jacquie Mendez	(213) 367-3163
Jessica Sorino	(213) 367-3143



# MISSION STATEMENT:

*The mission of the Los Angeles Water and Power Employees' Association is to support employees through specialized programs designed to enhance lifestyles and improve the quality of life for retirees, active employees, and their families.*

## ASSOCIATION INFORMATION

### LOS ANGELES WATER AND POWER EMPLOYEES' ASSOCIATION

John Ferraro Building  
111 North Hope Street, Room A-17  
Los Angeles, CA 90012  
(213) 367-3146 Fax (213) 367-3286

**Office hours: Monday through Friday 8:00 a.m. to 3:30 p.m.**

Serving employees and retirees of the City of Los Angeles and Department of Water & Power at locations throughout the Greater Los Angeles Area, Victorville, Owens Valley, Nevada, and Utah since 1933.

#### Board of Directors:

Joe Avila	Joint System
Ramiro Beltran	Retired Employees' Rep.
Shirley Brown	Joint System
Fernando De La Luz	Joint System
Ann Marie De La Riva, CFO	Joint System
Bryan Grace	Association Director
Gale Harris, President	Joint System
Lisa Morrison-Kassel	Joint System
Linda Kubo, Secretary	Power System
Diana Lozano	Power System
John Nagel	Power System
Edward Rodgers	Water System
Willie Tam	Power System
Debra Turner	Water System
Matt Woodson, Executive Officer	Power System
Anita Wright	Power System
Vacant	Water System

- We accept cash, Visa, MasterCard, and Discover. Sorry, no personal checks.
- It is the purchaser's responsibility to check ticket expiration dates and theme park operating hours.
- We reserve the right to limit the number of tickets sold to each Association member.
- There is a nominal surcharge on most tickets sold through the Association to help defray operational expenses.
- Ticket prices are subject to change without notice.

**Vendors are not endorsed by the Los Angeles Department of Water & Power or the Employees' Association.**

# FINANCIAL ASSISTANCE

These are your Employees' Association's no cost and convenient financial assistance programs:

<b>MEDICAL / DENTAL LOANS</b>	Your Employees' Association can provide an interest-free, no cost, automatically payroll deducted loan for medical and dental procedures not covered by your health plan.
<b>DEATH-IN-FAMILY LOANS</b>	The death of an immediate family member can be devastating, but our staff will assist you in applying for an interest-free, no cost loan, automatically payroll deducted to cover funeral related expenses.
<b>EMERGENCY LOANS</b>	Emergencies seem to occur when we least expect them. If you are affected by an unforeseen financial hardship, we also have automatically payroll deducted interest-free, no cost emergency loans.
<b>SAFETY SHOE LOANS &amp; EQUIPMENT</b>	Do you need safety shoes for your job? Your Employees' Association can provide an interest-free, no cost, automatically payroll deducted loan. Visit one of our approved vendors. Forms are available from the safety shoe vendor.
<b>DISABILITY ADVANCES</b>	Disability checks are sometimes delayed due to late medical certification or processing requirements. We can provide an early advance of up to 80% of the amount of your disability check.

**Who can apply for assistance?**

All active employees on the Department payroll who have completed probation, or any LADWP retiree

**How is a loan repaid?**

Two and a half years, or sixty consecutive pay periods, following death-in-family and dental/medical loans advances ~  
 Three consecutive pay periods following emergency loans or safety shoe and equipment purchases

**What types of requests will be considered?**

Transportation or housing bills caused by an emergency ~ Non-covered dental or health expenses ~  
 Death-in-family funeral expenses

**What type of documentation is needed to process an application?**

Easy qualification process with NO CREDIT CHECKS! • Submit a completed loan application, a past due bill, medical/dental bill, written estimate from repair shop or other creditor information ~ Acceptable proof of the obligation or need ~ Copies of your two most recent pay stubs

**When are loan applications due?**

No later than Friday at 3:00 p.m. to be reviewed on the following Tuesday ~  
 Certain emergency requests are reviewed and approved in 24 hours or less

**Who are checks made payable to?**

Loan checks can be made payable only to the creditor, business or institution

Funding for these programs is made possible by your generous contributions to

**THE DONORS' WELFARE PLAN**

For more help with completing an application, or for questions, please contact:  
 Employees' Association, JFB Room A-17, (213) 367-3146

# OASIS WOMEN'S RECOVERING COMMUNITY

To The LADWP Employees' Association,

Oasis Women's Recovering Community in Sylmar has been helping the women of Los Angeles for more than 22 years. Founded in 1991, Oasis has been a safe haven, a comprehensive rehabilitation program, and a loving and supportive home for women who need help. Oasis accepts women from all walks of life and the majority of them come from no or low income homes. No one is turned away for lack of funds, although Oasis is not funded by any governmental agency. Oasis survives through donations, volunteers, and the fundraising activities that the women perform, including car washes, comedy shows, being part of a paid audience at TV show tapings, and face-to-face sales. We sell coupon booklets for a popular hamburger restaurant to people at shopping centers. The women learn valuable sales and communication techniques. Many of them have gone on to make good careers through learning these tools.

The Oasis program also provides classes on addiction education, relapse prevention, parenting, self-esteem

workshops, health education, domestic violence education, anger management, stress reduction, and many other valuable topics.

Adult women live at Oasis for six months of treatment, and can then transition to the Oasis Sober Living House where they may work, attend school, and still receive counseling, rules and structure.

We would like to thank each and every one of the active and retired employees of the LADWP for making contributions to the Donors' Welfare Plan. We extend to you our deepest gratitude. Your generosity, kindness and compassion have greatly helped the women at Oasis to reunite with their families and to regain hope and dignity.

Sincerely,

Anjanay Berrocal/ Program Director  
And The Women Of Oasis



Participating in a cooking for kids activity



Oasis helps to reunite families through sobriety



L.A. Marathon- Teaching women to be part of the positive spirit of Los Angeles



L.A. Mission- Taking a moment to ham it up for the camera while feeding the homeless downtown

# PLEASE SUPPORT YOUR DONORS' WELFARE PLAN!

Employees and retirees of LADWP have helped each other through difficult times by contributing to the **Donors' Welfare Plan** which has funded the Employees' Association since the early 1900s. The **Donors' Welfare Plan** relies on your compassionate assistance in order to continue providing programs that assist LADWP employees and retirees in times of need. These programs include:

-  **DEATH-IN-FAMILY, MEDICAL/DENTAL & EMERGENCY LOANS**
-  **EMPLOYEE CLUB & ORGANIZATION SUPPORT**
-  **SAFETY SHOES & EQUIPMENT LOANS**
-  **DOWNED WORKER PROGRAM**
-  **NURSING CARE GRANTS**
-  **DISABILITY ADVANCES**
-  **MEDICAL EQUIPMENT**

The facing page spotlights one of several employee recommended local charities supported by the Donors' Welfare Plan.

Please consider giving or increasing your current donation to become part of the LADWP tradition of helping others. Complete the information below and forward it to the Employees' Association. Remember, any amount helps and it is sincerely appreciated.



PAYROLL \_\_\_\_\_ EMPLOYEE # \_\_\_\_\_ NAME \_\_\_\_\_

**LADWP Donors' Welfare Plan**  
LOS ANGELES WATER AND POWER EMPLOYEES' ASSOCIATION

**PHILIP R. LEIBER**  
**CHIEF FINANCIAL OFFICER**

You are hereby authorized to deduct from my salary or wages that may be earned and become due me for all pay periods for which authorized deductions are made the amount indicated in the space provided and to pay same to the Los Angeles Water & Power Employees' Association for the Account of the Donors' Welfare Plan. This authorization will remain in effect until canceled by me in writing.

Please return this card to: LADWP Employees' Association, 111 N. Hope Street, Room A, 17, Los Angeles, CA 90012.

Thank you for your Donors' Welfare Plan support! Remember, the need for your help increases annually.

	INITIALS
_____% OF BI-WEEKLY SALARY	DOLLAR
_____% OF BI-WEEKLY SALARY	AMOUNT
MY DONATION CHOICE -	
WRITE IN AMOUNT TO DEDUCT	
INCREASE MY DONATION TO	

The above contributions occur on 24 payroll periods per year.

SIGNATURE \_\_\_\_\_ DATE \_\_\_\_\_  NEW DONOR

Check here for a ONE TIME donation. Make check/money order payable to Donors' Welfare Plan

**THANK YOU FOR ASSISTING LADWP EMPLOYEES, RETIREES, AND THE LOCAL COMMUNITY!**

# WAYS TO BEAT THE HEAT

A summer of enjoyment at special LADWP discounted prices!



How many of us can recall days spent running through the sprinklers trying desperately to beat the California heat? Summers in California are a favorite time of year, the radiant sun brushing your skin, children's laughter filling the air as they run free from another school year accomplished. It is a time of renewal, and a time to appreciate the child in us all. What better way to accomplish both than to head down to one of California's water parks? Water rides meant to tickle your tummy and cool your skin await you and your children everyday of the summer.

If you feel daring, there are rides such as The Abyss, Honolulu Half Pipe, The Black Hole or the death defying Pacific Spin. However, if you find that you are more of the relaxation type then try the Lizard Lagoon or the Kiddie Congo. Regardless of the intensity of your fun meter, there is a vast array of rides that each park offers.

Don't forget that your Employees' Association offers great discount prices to each of the water parks! For more details call (213) 367-3146.

WATER PARKS		Association Price	Regular Price	Savings
<b>Hurricane Harbor</b>	General	\$26.00	\$31.00	\$5.00
<b>Raging Waters</b>	General	\$29.50	\$38.99	\$9.49
<b>Knott's Soak City</b>	Adult	\$25.00	\$36.00	\$11.00
	Child	\$22.00	\$26.00	\$4.00

Visa /MasterCard accepted at the J.F.B. no personal checks! Tickets Subject To Availability/Prices Subject To Change Although The Employees' Association Offers Substantial Savings on Its Tickets and Merchandise, Our Price May Not Always Be The Lowest Available. Employees' Association - J.F.B. Rm. A17, (213) 367-3146





# Discover the June Keyes Penguin Habitat.

 [aquariumofpacific.org](http://aquariumofpacific.org)

**FOR DISCOUNT TICKETS, PLEASE CONTACT:**

## Los Angeles Department of Water & Power

To purchase your discount tickets, contact:

Employee's Association

(213) 367-3146

Adult Price \$19.95 (Regular price \$25.95)    Child Price \$12.95 ages 3-11 (Regular price \$14.95)

**562.590.3100** 100 AQUARIUM WAY, LONG BEACH, CA 90802

# OFFICIAL LADWP LOGO MERCHANDISE



	Color	Size / Price
<b>Polo Shirt</b>	Black,Gray,Navy	S-XL \$27.00, 2XL \$28
<b>Men's Pocket T-Shirt</b>	Black,Gray,Blue,White,Green,Orange	S-3XL \$16.00
<b>Crewneck Sweatshirt</b>	Black,Gray,Navy	S-XL \$21.00, 2XL \$22.00
<b>Men's Long Sleeve T-Shirt</b>	Navy, Sand,Gray, Black	S-2XL \$19.00
<b>Women's V-neck</b>	Purple,Pink,Denim,Gray	S-XL / \$16.00
<b>Gym Bags w/Shoe Tunnel</b>	Blue	\$18.00
<b>Explorer Hat</b>	Beige	\$17.00
<b>Mug w/spoon</b>	Black w/ Blue, Brown w/ Almond	\$6.00
<b>LADWP Tumbler w/straw</b>	Clear	\$7.00
<b>Travel Tumbler</b>	Blue,Green	\$8.00
<b>Retirement Mug</b>	Cobalt Blue	\$9.00
<b>Cap</b>	Black,Gray,Navy	\$10.00

# Exclusive savings from Apple.

Apple and LADWP bring you a special program. You qualify for preferred pricing on select Apple products.

**Program benefits:**

- Special member pricing on select Apple products
- Exclusive promotions
- Complimentary shipping on orders over \$50
- Free engraving on all new iPod & iPad models
- Mac customization
- Ratings and reviews on accessories and software

To receive the Employees' Association discount, visit our homepage at: <http://hrweb/EA/Home.htm>

Would you like to receive the latest EPP monthly specials and information? Send an email to [eppnews@group.apple.com](mailto:eppnews@group.apple.com). Identify yourself as a LADWP employee when calling.



Apple product purchases are for personal use only and not part of an IMITS initiative. Any use of this device in a work setting would be on the same basis as if the device was purchased privately. As per PHSA's "Acquisition of Computers, Software, Telephony Equipment and Related Devices" policy (available on POD), devices which will be installed on the PHSA network, used for PHSA business or used in conjunction with PHSA computers, software, or related devices must be approved by and/or coordinated through IMITS, at the cost of the user.

Employees/Members can purchase or sponsor up to 3 computer systems per calendar year. Please identify yourself as an eligible participant purchasing from the Apple Employee/Member program, and remember to request your EPP preferred pricing when calling Apple. Promotion details are listed on your store site. Terms and conditions apply. Not all products are available for discount. TM and © 2012 Apple Inc. All rights reserved.

# TICKETS

THEME PARKS		Association Price	Regular Price	Savings	Expires
<b>Adventure City</b>	1 year & under free	\$11.50	\$14.95	\$3.45	None
<b>Boomers</b> All-Day Play Pass includes: unlimited golf & attractions. No blackout dates • Valid at 11 locations	General	\$17.00	\$29.99	\$12.99	None
<b>Castle Park</b>	General	\$14.00	\$19.99	\$5.99	09/14/14
<b>Catalina Express</b> Round trip transportation	Adult Child (2-11)	\$63.00 \$54.00	\$74.50 \$59.00	\$11.50 \$5.00	12/31/14 12/31/14
<b>Disneyland - 1 Day 1 Park</b>	Adult Child (3-9)	\$90.00 \$84.00	\$92.00 \$86.00	\$2.00 \$2.00	12/31/14
<b>Golf 'N' Stuff</b>	All Park Pass 2 Hour Unlimited	\$13.00 \$16.00	\$33.50 \$25.00	\$20.50 \$9.00	None
<b>K1 Speed Zone</b> 14 Lap Race Card + Drivers License	General	\$16.00	\$25.95	\$9.95	None
<b>Knott's Berry Farm</b>	Adult Child(3-11) / Seniors (62+)	\$36.00 \$28.00	\$62.00 \$33.00	\$26.00 \$5.00	12/31/14
<b>LEGOLAND- 2<sup>nd</sup> Day Free!</b>	Adult Child (2& under free)	\$63.00 \$63.00	\$103.00 \$93.00	\$40.00 \$30.00	09/27/14 09/27/14
<b>LEGOLAND- Resort Hopper</b>	Adult Child (2& under free)	\$73.00 \$73.00	\$127.00 \$117.00	\$54.00 \$44.00	09/27/14 09/27/14
<b>Long Beach Aquarium of the Pacific</b>	Adult Child (3-11)	\$19.95 \$12.95	\$28.95 \$14.95	\$9.00 \$2.00	11/30/14 11/30/14
<b>Los Angeles Zoo</b>	Adult Child (2-12)	\$16.00 \$13.00	\$18.00 \$14.00	\$2.00 \$1.00	None
<b>Magic Mountain</b>	General	\$41.00	\$64.99	\$23.99	09/28/14
<b>Medieval Times</b>	Adult Child (under 12)	\$43.50 \$33.00	\$57.95 \$35.95	\$14.45 \$2.95	None
<b>Mulligans All Day Passes</b>	General	\$16.00	\$23.99	\$7.99	None
<b>Pacific Park – Santa Monica Pier</b>	All ages	\$15.00	\$22.95	\$7.95	01/05/15
<b>San Diego Zoo</b>	Adult Child (3-11)	\$40.00 \$32.00	\$46.00 \$36.00	\$6.00 \$4.00	04/10/15 04/10/15
<b>San Diego Zoo Safari Park</b>	Adult Child (3-11)	\$40.00 \$28.00	\$46.00 \$36.00	\$6.00 \$6.00	07/25/14 07/25/14
<b>Sea World - Single Day</b>	Adult Child (3-9)	\$65.00 \$65.00	\$84.00 \$78.00	\$19.00 \$13.00	01/21/15 09/20/14
<b>Sea World - Fun Card</b> Buy a day, get 2014 free Not valid May 25, July 4, 5, 19 Aug 2, 9, & 31	Adult Child (3-9)	\$75.00 \$74.00	\$84.00 \$78.00	\$9.00 \$4.00	12/31/14 12/31/14
<b>SpeedZone</b>	General	\$26.00	\$49.99	\$23.99	01/08/15

Visa /MasterCard accepted at the J.F.B. No personal checks! Tickets subject to availability/prices subject to change. Although the Employees' Association offers substantial savings on its tickets and merchandise, our price may not always be the lowest available. Employees' Association - J.F.B. Rm. A17, (213) 367-3146

RIDE NOW OPEN  
**DESPICABLE ME**  
**MINION MAYHEM**



**3 DAYS FOR \$75**

Purchase your tickets at:

**HRWEB only**



**UNIVERSAL STUDIOS HOLLYWOOD**<sup>SM</sup>

Ticket must be activated on or before 1/31/15. 2nd and 3rd visits valid for 12 months from the first date of activation. Revisit black-out dates and restrictions apply, refer to black-out date calendar <http://www.universalannualpass.com/2014Z>. Black-out dates subject to change. ID and finger scan required for Park entry. Cannot be combined with any other offers, special events, pre-sold tickets, Halloween Horror Nights or discounted tickets, including under 48" discounted price. Prices subject to change without notice. USH Management interpretation is final. ©2014 Universal Studios. All Rights Reserved. 13-L0C-14185 A Division of NBCUniversal

**TICKETS**

<b>MOVIES</b>	<b>Association Price</b>	<b>Regular Price</b>	<b>Savings</b>	<b>Expires</b>
<b>AMC Gold – unrestricted</b>	\$8.50	\$12.50	\$4.00	None
<b>AMC Silver – restricted</b>	\$7.25	\$12.50	\$5.25	None
<b>AMC Movie Bundle</b> Includes: 2 gold tickets, 2 small sodas, 1 small popcorn	\$26.00	\$39.99	\$13.99	None
<b>Cinemark’s Platinum Supersaver – unrestricted</b>	\$8.00	\$10.25	\$2.25	None
<b>Harkins Theatre – unrestricted</b>	\$8.00	\$12.00	\$4.00	None
<b>Krikorian Theatre – unrestricted</b>	\$8.00	\$11.00	\$3.00	None
<b>Laemmle – unrestricted</b>	\$6.50	\$10.00	\$3.50	None
<b>Pacific Theatres – restricted</b>	\$6.75	\$10.00	\$3.25	None
<b>Pacific Theatre Bundle</b> Includes: 2 unrestricted passes, 2 medium soda, 1 medium popcorn	\$33.00	\$40.00	\$7.00	None
<b>Regal’s VIP Supersaver – restricted</b>	\$7.50	\$11.00	\$3.50	None
<b>Regal’s Premier SuperSaver – unrestricted</b>	\$8.50	\$12.00	\$3.50	None
<b>Regal’s Ultimate Premier Movie Pack</b> Includes: 2 unrestricted passes, \$10 cert.	\$27.00	\$32.00	\$5.00	None
<b>Regency Theatre – unrestricted</b>	\$7.50	\$12.00	\$4.50	None
<b>MISCELLANEOUS</b>				
<b>Forever Stamps – Book of 20</b>	\$9.80	\$9.80	n/a	n/a
<b>See’s Candies 1 lb certificates</b>	\$14.50	\$18.00	\$3.50	



**TICKET & MERCHANDISE SALES LOCATIONS**



For your convenience, your Employees’ Association representative is in Granada Hills every Tuesday from 11:30 a.m. - 3:15 p.m. to sell tickets and merchandise.

**Water and Power Community Credit Union**  
**16840 Devonshire Street (North Hills Plaza)**  
**Granada Hills**

For any merchandise requests please contact the Employees’ Association Office at 213-367-3146



# LEGOLAND<sup>®</sup>

## CALIFORNIA RESORT



**NEW CHIMA<sup>™</sup>  
Water Park!**  
Presented by  
Cartoon Network

# Save up to \$34!

and get a 2nd day FREE!

on a LEGOLAND<sup>®</sup> Resort Hopper Ticket, valid for admission to LEGOLAND, SEA LIFE<sup>®</sup> Aquarium and the LEGOLAND Water Park and get a 2nd day FREE to all three!

Discount tickets can be purchased at the Employees' Association JFB Room A17, x73146 or on the company intranet site.



LEGOLAND<sup>®</sup> Hotel



SEA LIFE<sup>®</sup> Aquarium



THE LEGO<sup>®</sup> MOVIE EXPERIENCE

## LEGOLAND<sup>®</sup> Hotel – Book Now & SAVE!

Two ways to book your exclusive room discount!

1. Call (877) LEGOLAND (877-534-6526) and request the Corporate Rate
2. Book online at [LEGOLAND.com/CorporateHotel](http://LEGOLAND.com/CorporateHotel)

*\*Rates subject to availability. Blackout dates may apply. Not to be combined with any other offer. Management reserves all rights.*

THE LEGO MOVIE © The LEGO Group & Warner Bros Entertainment Inc. All rights reserved. BATMAN: TM & © DC Comics. © Warner Bros. Entertainment Inc. (s14) TM & © 2014 Cartoon Network. A Time Warner Company. All Rights Reserved. Water Park open seasonally. Visit [LEGOLAND.com](http://LEGOLAND.com) for hours. LEGOLAND Water Park is located inside LEGOLAND California and requires same-day visit to LEGOLAND California. LEGO, the LEGO logo, the Brick and Knob configurations, the Minifigure, LEGENDS OF CHIMA and LEGOLAND are trademarks of the LEGO Group. ©2014 The LEGO Group. LEGOLAND AND SEA LIFE ARE A PART OF THE MERLIN ENTERTAINMENTS GROUP.

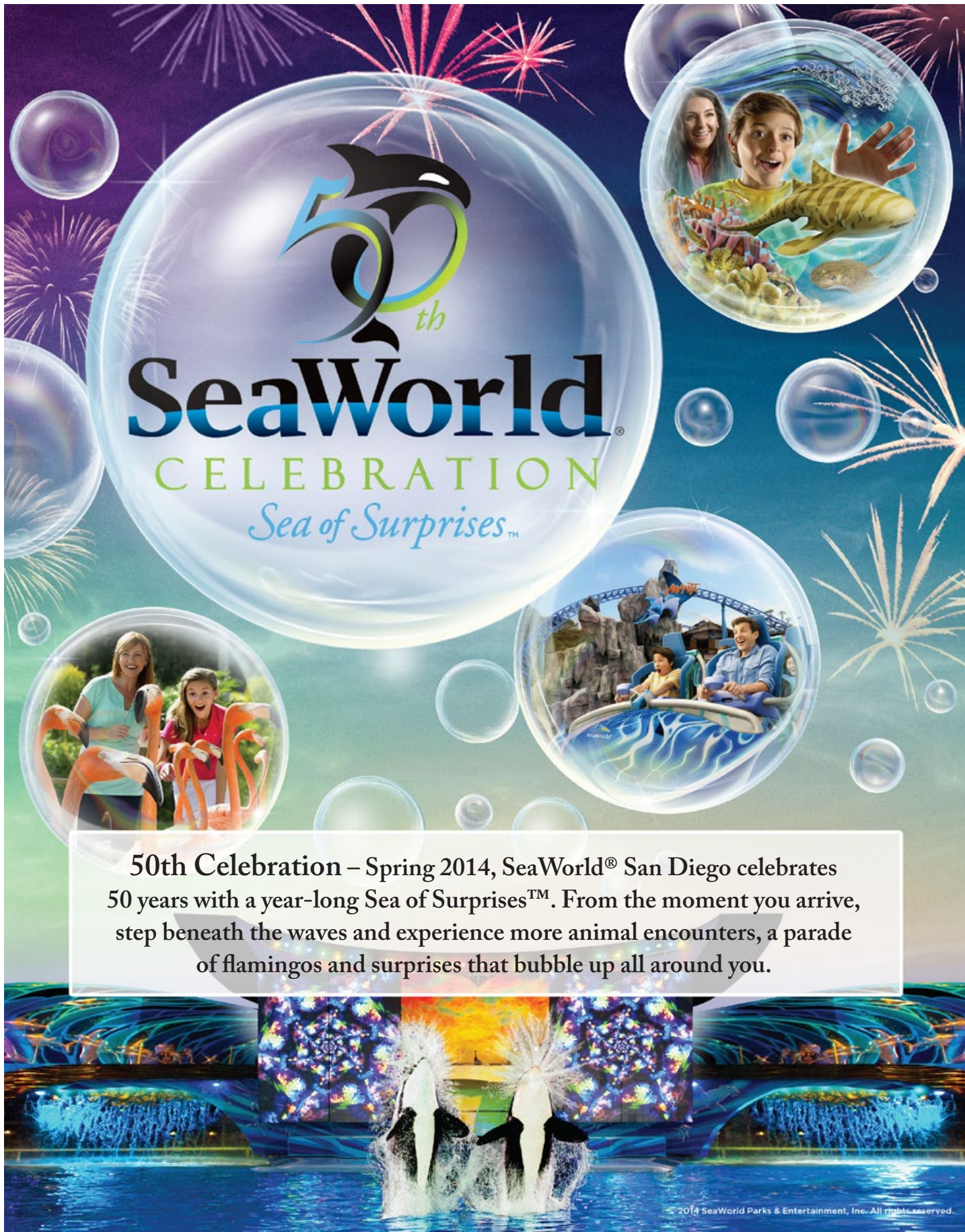


**E-TICKETS ON THE LADWP INTRANET**

To access the site, enter hrweb on DWP Computer/Click on the Employees' Association Link/Click on Eticket Link/ Select Theme Park Banner

<b>THEME PARKS</b>		<b>Association Price</b>	<b>Regular Price</b>	<b>Savings</b>
<b>Disney 1 Day, 1 Park</b>	Adult	\$88.32	\$92.00	\$3.68
	Child	\$82.56	\$86.00	\$3.44
<b>Disney 1 Day Park Hopper</b>	Adult	\$125.36	\$137.00	\$11.64
	Child	\$119.87	\$131.00	\$11.13
<b>Disney's Premium Annual Pass</b>	General	\$635.55	\$669.00	\$33.45
<b>Disney's Deluxe Annual Pass</b>	General	\$474.05	\$499.00	\$24.95
<b>Disney's So Cal Annual Pass</b>	General	\$341.05	\$359.00	\$17.95
<b>Disney's So Cal Select Annual Pass</b>	General	\$265.05	\$279.00	\$13.95
<b>Visit the Disney link for more ticket offers</b>				
<b>Knott's Berry Farm</b> +\$5.99 processing fee	Adult	\$32.00	\$62.00	\$30.00
	Child	\$26.00	\$33.00	\$7.00
<b>Legoland 1 Day - plus 2nd day free!</b>	Adult	\$67.00	\$103.00	\$36.00
	Child	\$62.00	\$93.00	\$31.00
<b>Legoland Hopper - plus 2nd day free!</b>	Adult	\$72.00	\$127.00	\$55.00
	Child	\$67.00	\$117.00	\$50.00
<b>Long Beach Aquarium of the Pacific</b>	Adult	\$17.95	\$28.95	\$11.00
	Child	\$10.95	\$14.95	\$4.00
<b>Sea World</b>	Adult	\$76.00	\$84.00	\$8.00
	Child	\$70.00	\$78.00	\$8.00
<b>Sea World Fun Card</b>	Adult	\$78.00	\$84.00	\$6.00
	Child	\$78.00	\$84.00	\$6.00
<b>Universal Studios - Buy a day, get 2 days free</b>	General	\$75.00	\$84.00	\$9.00
<b>Universal Studios</b> Buy a day, get 2014 Free!	General	\$84.00	\$84.00	N/A
<b>Universal Studios</b> 12 months of unlimited fun	General	\$124.00	\$149.00	\$25.00





50th Celebration – Spring 2014, SeaWorld® San Diego celebrates 50 years with a year-long Sea of Surprises™. From the moment you arrive, step beneath the waves and experience more animal encounters, a parade of flamingos and surprises that bubble up all around you.

© 2014 SeaWorld Parks & Entertainment, Inc. All rights reserved.

# LOS ANGELES WATER AND POWER EMPLOYEES' ASSOCIATION



## TICKET ORDER FORM

- Prices and ticket availability are subject to change; please contact your Employees' Association office at (213) 367-3146 prior to mailing or faxing your order.
- All orders are sent via USPS Certified Mail.
- Members are responsible for money or tickets lost in the mail; however, insurance is available. For more information please contact your Association Office at (213) 367-3146.
- This order form is for tickets only. For merchandise, please use a mail runner or contact your Employees' Association at (213) 367-3146.

Member Name \_\_\_\_\_ Employee Number \_\_\_\_\_  
 (Please Print CLEARLY)

Home Address \_\_\_\_\_

City \_\_\_\_\_ State \_\_\_\_\_ Zip \_\_\_\_\_

Home Phone \_\_\_\_\_ Work Phone \_\_\_\_\_

Sorry, no personal checks accepted!    VISA    MasterCard    Money Order    Cashier's Check

Card Account # \_\_\_\_\_ Expiration \_\_\_\_\_ 3-digit code \_\_\_\_\_

Name as it appears on the credit card \_\_\_\_\_

Signature \_\_\_\_\_ Date \_\_\_\_\_

**ALL SALES ARE FINAL! NO REFUNDS OR EXCHANGES!**

Item Description	Quantity	Unit Price	Total
_____	_____	\$ _____	\$ _____
_____	_____	\$ _____	\$ _____
_____	_____	\$ _____	\$ _____
_____	_____	\$ _____	\$ _____
_____	_____	\$ _____	\$ _____

**(Office Use Only)**  
 Credit Authorization Code \_\_\_\_\_  
 Mailing Date \_\_\_\_\_  
 Processed By \_\_\_\_\_  
 Tracking Number \_\_\_\_\_

Sub Total \$ \_\_\_\_\_  
 Insurance \_\_\_\_\_  
 (Optional) \$ \_\_\_\_\_  
**TOTAL** \$ \_\_\_\_\_

111 N. Hope Street, Room A-17 Los Angeles, CA 90012 (213) 367-3146 Fax (213) 367-3286

**THRILL CAPITAL OF THE WORLD**



**2014 ACTIVE  
EMPLOYEE PICNIC  
SATURDAY, JULY 19, 2014**

BROUGHT TO YOU BY YOUR



**LOS ANGELES WATER & POWER  
EMPLOYEES' ASSOCIATION AND YOUR  
GENEROUS DONATIONS TO THE  
DONORS' WELFARE PLAN.**

**MEAL TIME** 11:30 a.m. - 1:30 p.m. **PICNIC HOURS** 11:30 a.m. - 3:00 p.m.

**REGULAR SALE TICKETS AVAILABLE FOR  
\$40.00 EACH**

**DISCOUNTED SPORTS BOTTLES VOUCHER  
AVAILABLE FOR \$10.00 EACH (REG. \$14.99).**

**DISCOUNTED PARKING PASSES AVAILABLE  
FOR \$15.00 EACH (REG. \$20.00).**

THESE DISCOUNTS WILL NOT BE AVAILABLE AT THE PARK.

**LIMIT OF 4 TICKETS PER EMPLOYEE  
WHILE SUPPLIES LAST!**

**ALL TICKET SALES  
CASH ONLY**

**EVERY GUEST WILL RECEIVE  
A FREE RETURN TICKET TO  
SIX FLAGS HURRICANE HARBOR**

**FOR INFORMATION CONTACT:  
YOUR ASSOCIATION BOARD DIRECTOR  
REPRESENTATIVE**

SEE PAGE 2 FOR A LIST OF DIRECTORS

**CHILDREN  
AGES 2 AND UNDER  
FREE**

PLUS! THIS SUMMER

**HOT ROD  
RACERS**

NEW FAMILY COASTER

LOONEY TUNES: WARNER BROS. ENTERTAINMENT INC. BATMAN: SUPREMACY TM & © DC COMICS. © 2014

# FROM BABY GRAND TO POETRY... ANOTHER GREAT EVENING OF ENTERTAINMENT TO BENEFIT DONORS' WELFARE PLAN

Department employees and guests enjoyed an evening of great entertainment and had lots of fun when the Water & Power Employees' Association presented the second "Live at JFB," a talent show that featured LADWP employees. Keith Session, Assistant Director, Water Distribution Division, once again, served as the hilarious master of ceremonies. The program showcased a very diverse range of talented singers, musicians, dancers, and poets from various job classifications who shared their talent to benefit the Donors' Welfare Plan. The show featured various music genres – pop, folk, jazz, and R&B. Poetry and spoken word delighted the audience, too.

LADWP General Manager Marcie Edwards took time from her busy schedule to join the crowd who gathered in the JFB Auditorium on a Friday evening. She congratulated the Association on the fine work they are doing and added a bit of humor when she explained the benefits of the Donors' Welfare Plan and gave the crowd a few options on how to give their support. She also told them they can simply *stop on by* the Association office to sign up for payroll deduction or make a one time donation...

The Talent Show committee was comprised of Co-Chairs Gale Harris, Senior Public Relations Specialist and President of the Association, and Association Board member Shirley Brown, CSR. They received tremendous support from the Association's Board of Directors, the Services and Donors' Welfare Committees, Association Director, Bryan Grace and the remarkable Association staff.

Shirley stated, "We would like to thank all of our supporters, and the participants who shared their talents to benefit this very worthy cause." She added, "A very special thanks goes to those who donated the valuable silent auction prizes." They included the Hilton LAX who donated a luxurious overnight stay and a beautiful gift basket, and the Music Center who donated two pairs of tickets to two different performances. Charlotte Magee-Pierre also donated two

beautiful sets of beads and matching earrings, designed and hand-crafted by her.

Gale Harris stated, "We would like to thank the Water & Power Community Credit Union (WPCCU) for the nice stainless steel water bottle that every guest received in the SWAG bag."

The American Cancer Society also donated a little token of their appreciation to LADWP employees, in appreciation of the support the Department gave them over the years for the [now discontinued] Daffodil Days Campaign.

A real special thanks to MC Keith Session, all of the performers, Reggie Brewer and T. C. Richards (sound), Eric Botero (graphics), and everyone who helped make the show a tremendous success.

A special thanks to the members of the band: Michael Chaney - Bass; Mel Garguena - Keyboards; David Geere - Guitar; John Mosser - Drums; Dale Thompson - Guitar. The band provided a variety of music throughout the evening and accompanied some vocalists.

For almost 100 years, LADWP management and employees have supported the Donors' Welfare Plan. The Plan is LADWP's non-profit employee charitable program that helps fellow employees when unexpected emergencies occur, as well as almost 30 local charities. Assistance is available through the following programs: Emergency Loans, the Downed Worker Program, Disability Advances, Death-in-Family and Medical/Dental Loans, Safety Shoe & Equipment Loans, Medical Equipment, the Doll 'N' Toys Holiday Program - to name a few...

Throughout the year, employees can donate through semi-monthly payroll deductions. If you would like to sign-up for payroll deductions or make a one time donation, please contact the Association Office – JFB Room A-17.

## Performers:

Josefa "Pepa" Esparrago –  
Environmental Division  
*Mayon, A Filipino Concierto* by  
Felipe Buencamino

Lourdes Zerrudo, Maria Lucero,  
& Cindy Keck  
Utility Executive Secretary;  
Legal Secretary; CSR  
*Zumba*

Larry Stiner –  
Customer Service Rep  
*Customer Call Center Hero –  
An Original Poem*

Todd Terry – Security Services  
*You and I*

Tim Lennon – Cement Mixer  
*Turn Your Love Around*

Charlotte Magee-Pierre –  
Office Engr. Tech  
*We Shall Behold Him -  
Gladys Estrada,  
Sign Language Translator*

Charlotte Magee-Pierre  
*Hero - Tribute to Ron  
Hunnell*

Jesse Torres – Line Maintenance  
Assistant *A Sunday Kind of Love*

Rory Darvel (Holmes) –  
Metro Meter Reader  
*Beautiful Ones*

Janaci (Janet Mitchell) –  
Customer Service Rep  
*"On The Mic", an Original  
Musical Poem* by Janaci

Samuel Bourne – Custodian  
*It's A Rap*

Paul Ramey – Security Services  
*Skyfall*

Kirkland Walls –  
Electric Craft Helper  
Comedian

Ramon Flores –  
Civil Engineering  
Drafting Tech  
*Don't Be Cruel*



# We're the HOME for your HOME LOAN

Lower payments. More money for things that matter.



A great rate  
**PLUS \$750**  
at loan  
funding!

The power of a POWERHouse  
Five home loan is a low  
**2.750%/ 2.799% APR\***  
fixed for five years.

It's the little things that make a difference. Lower monthly payments can allow you to pay for sports uniforms, music lessons or a home improvement. No points for this rate, plus, we'll give you a check for \$750 at loan funding!\*\*

**Sunset Branch**  
at Beauty and Sunset  
1053 West Sunset Blvd.  
Los Angeles, CA 90012-2134  
Monday - Friday: 8 a.m. to 5 p.m.

**Sun Valley Branch**  
Canyon Plaza Shopping Center  
8413 Laurel Canyon Blvd.  
Sun Valley, CA 91352-3817  
Monday - Friday: 9 a.m. to 6 p.m.  
Saturday: 9 a.m. to 1 p.m.

**Westchester Branch**  
8800 S. Sepulveda Blvd.  
Westchester, CA 90045-4851  
Monday - Friday: 9 a.m. to 6 p.m.  
Saturday: 9 a.m. to 1 p.m.

**JFB/ Hope Street Branch**  
(DWP access only)  
111 North Hope St.  
Los Angeles, CA 90012-2607  
Monday - Friday: 8 a.m. to 5 p.m.

**Northridge/Granada Hills Branch**  
North Hills Plaza Shopping Center  
at Devonshire and Balboa  
16840 Devonshire St.  
Granada Hills, CA 91344-7404  
Monday - Friday: 8 a.m. to 5 p.m.



\*APR = annual percentage rate. \*\*POWERHouse 5/1 loan fixed for five years payment example: a purchase or refinance at a loan amount of \$417,000 for an interest rate of 2.799% APR is a \$1,702 monthly payment. Projected payment is for example only, is not inclusive of all fees and costs, does not include taxes and insurance, and is based on interest rates as of 3/27/14. The POWERHouse Five loan has a fixed rate for five years and is adjustable for the remaining term of the loan (amortized for 30 years), with a 5% rate increase cap over the life of the loan. After the initial fixed rate period, your interest rate may change annually and any change will impact your monthly payment. Maximum LTV up to 80%. Our \$750 at loan funding offer is for new applications for the PowerHouse Five loan only and not valid for refinancing existing WPCCU loans. All loans are subject to approval based on qualified credit and ability to pay. Rates may change at any time. Please see a WPCCU home loan specialist for more information and current rates.

Federally insured by NCUA



800-300-9728 • wpcu.org

# PICK YOUR CARD

## MATCH YOUR STYLE



### LADOT PASSES AND TRIP TICKETS ARE NOW ON TAP

And LADOT has 4 limited edition TAP cards to choose from.....They all work the same way---What's your style?

- NO more paper passes or tickets will be sold
- Commuter Express Passes and Trip Tickets and DASH Passes will only be available on TAP cards
- DASH tickets will no longer be available, but stored value (cash) can be added onto TAP cards
- Also introducing new 31 day passes



### BUS PASS

DESCRIPTION	PRICE
Base Pass	\$57.00
Zone 1 Pass	\$80.00
Zone 2 Pass	\$100.00
Zone 3 Pass	\$124.00
Zone 4 Pass	\$140.00

### 20 TRIP TICKETS

DESCRIPTION	PRICE
Base Pass	\$30.00
Zone 1 Pass	\$46.00
Zone 2 Pass	\$56.00
Zone 3 Pass	\$67.00
Zone 4 Pass	\$75.00

**DASH DOWNTOWN OPERATES MONDAY - FRIDAY, EVERY 5-12 MINUTES**

For more information visit: [ladottransit.com](http://ladottransit.com) or call the LADOT Transit Store at 213-808-2273.



# EMPLOYEES' ASSOCIATION TREASURE HUNT



## Has anyone seen the Donors' Welfare Plan Campaign Trophy?

It is a large gold cup on a square wooden base with placards of previous campaign winners.

**There will be a prize awarded to the person that leads us to its whereabouts!**

## CATALINA ISLAND

It's just an hour boat ride away. Go for the day or an overnight stay. Enjoy the abundance of island activities including kayaking, snorkeling and parasailing, or hiking, biking and tours to explore the island's interior beauty.

- Up to 30 daily departures from Long Beach, San Pedro, or Dana Point
- Airline Style Seating for outstanding comfort
- The fastest fleet of boats



**Discount Tickets available in Employee Store**

Advance purchase required. Restrictions apply.

Discount not available at terminal.

No refunds or exchanges. For more

information call 562-485-3300 or

visit [CatalinaExpress.com](http://CatalinaExpress.com)





# SALAMI-POPS: CREAM CHEESE AND SALAMI-ROLLED BREADSTICKS



Salami-pops are simply breadsticks wrapped with cheese, spinach and salami. This creative salami appetizer recipe is perfect for any occasion where you need an easy and inexpensive bite.

Makes 24 Salami-Pops - Cream Cheese and Salami-Wrapped Breadsticks

## INGREDIENTS

- 24 thin slices salami (the larger diameter the salami, the better)
- 4 oz cream cheese, softened
- 24 spinach or arugula leaves, washed, dried
- 24 bread sticks

## PREPARATION

Spread each slice of salami with a teaspoon of cream cheese. Place one spinach leaf in the middle of the slice. Place the top of a breadstick on the edge of the salami slice and roll up tightly. Repeat, and pile the salami-pops on a serving tray; serve immediately.

# 2014 METRO PRICES

## REGULAR MONTHLY BUS PASS (ALL TAP ONLY)

DESCRIPTION	PRICE
Metro Monthly	\$75.00
Metro Zone 1	\$22.00
Metro Zone 2	\$44.00
Metro Disabled Pass	\$14.00
Student Monthly Pass	\$24.00



## THE EZ TRANSIT PASS

The EZ Transit Pass is a regional transit pass accepted by up to 25 different transit agencies throughout Los Angeles County. Paper Passes Are Only Available for EZ Passes. The EZ transit pass is the only pass valid for unlimited local travel on the following lines:

- ANTELOPE VALLEY TRANSPORTATION AUTHORITY (AVTA)
- BALDWIN PARK TRANSIT
- BEACH CITIES TRANSIT
- BURBANK LOCAL TRANSIT
- CARSON CIRCUIT
- CITY COMMERCE
- COMPTON RENAISSANCE
- CULVER CITY MUNICIPAL BUS LINES
- FOOTHILL TRANSIT
- GARDENA MUNICIPAL BUS LINES
- GLENDALE BEELINE
- HUNTINGTON PARK COMBI
- LADOT (DASH AND COMMUTER EXPRESS)
- LAX
- LONG BEACH TRANSIT
- METRO BUS & METRO RAIL
- MONTEBELLO BUS LINES
- MONTEREY PARK SPIRIT BUS
- NORWALK TRANSIT
- PASADENA ARTS SHUTTLE
- PALOS VERDES TRANSIT
- SANTA CLARITA TRANSIT
- SANTA FE SPRINGS METROEXPRESS
- SANTA MONICA BIG BLUE BUS
- SOUTH PASADENA GOLD LINK
- TORRANCE TRANSIT
- WHITTIER TRANSIT



• DOES NOT ACCEPT METROLINK PASSENGERS

DESCRIPTION	PRICE	DESCRIPTION	PRICE
EZ Pass	\$84.00	EZ Zone P4	\$88.00
EZ Zone P1	\$22.00	EZ Zone P5	\$110.00
EZ Zone P2	\$44.00	EZ Sr. Disabled	\$35.00
EZ Zone P3	\$66.00		

FOR MORE INFORMATION CALL (323) 466-3876  
OR VISIT: [www.metro.net](http://www.metro.net)



## EMPLOYEES' ASSOCIATION FACTS AND FIGURES

For more information, contact your Employees' Association office and join the Mutual Benefit Plan!

### DONORS' WELFARE PLAN ASSISTANCE

12	Emergency Loans	\$21,745.36
3	Death in Family Loans	\$11,587.46
6	Medical/Dental Loans	\$17,711.90
7	Late Disability Advances	\$9,891.00
2	Nursing Care Grants	\$3,200.00
*	Benevolent Grants (Med. Equip)	\$796.37
47	Safety Shoes	\$10,316.39
0	Retirement Death Benefit Adv.	\$0.00
	<b>Total:</b>	<b>\$75,248.48</b>

Assistance made possible by your generous donations to the Donors' Welfare Plan.

### MUTUAL BENEFIT PLAN MEMBERSHIP:

\$500.00	1	\$500.00
\$1000.00	135	\$135,000.00
\$2000.00	118	\$236,000.00
\$3000.00	1,085	\$3,255,000.00
\$4000.00	379	\$1,516,000.00
\$5000.00	1,585	\$7,925,000.00
\$10000.00	13	\$130,000.00
\$15000.00	493	\$7,395,000.00
\$20000.00	407	\$8,140,000.00
<b>Total</b>	<b>4,216</b>	<b>\$28,732,500.00</b>

## IN MEMORIAM

Your Employees' Association regrets to announce the passing of the following active and retired employees:

### Retired:

Loretta M. Bush	4/10/2014
George M. Butorac	4/21/2014
Marilyn DiGenova	4/15/2014
Ronald K. Ferrara	4/9/2014
Doyle F. Jones	4/19/2014

Paul E. Lorentzen	3/24/2014
William G. Marshall	3/22/2014
Alfredo Medina	4/15/2014
Myles Moran	3/31/2014
Charles S. Quan	4/25/2014

Donald W. Reeves	4/1/2014
Richard M. Shaw	4/12/2014
Donald Smith, Jr.	4/29/2014
John P. Terry	3/8/2014
Richard L. Wilson	4/9/2014

# DONORS' WELFARE PLAN



## YOUR SAFETY



*A TRADITION OF  
CARING THAT IS 80  
YEARS STRONG!*

In 1933, amidst the Great Depression (1929-1941), concerned employees incorporated your Water & Power Employees' Association (Association) to emphasize their long-term commitment of supporting their LADWP family through unforeseen hardships. They understood that where one suffering alone might fail, one with a safety net might succeed.

The Association's safety net worked to help its members through those harsh troubled times. With foresight and compassion, most every employee and retiree voluntarily gave to the Donors' Welfare Plan. The Donors' Welfare Plan provided emergency loans and advances and help with medical issues. The Donors' Welfare Plan also donated to select community charities and brought Christmas to under-privileged children in the area.

For over 80 years, the Association has expanded its services but its mission is unchanged. **The Association is still funded through the Donors' Welfare Plan.**

Because you are an active or retired employee of the Los Angeles Department of Water & Power, you are member of the Association. Your LADWP Badge is your Membership Card.

**PLEASE GIVE TO THE DONORS' WELFARE PLAN AND  
KEEP YOUR SAFETY NET INTACT!**

# RETIREMENT RECOGNITION PROGRAM



**Did you know that your Employees' Association honors employees when they retire from the Department of Water and Power?**

We do this to thank employees for their many years of service. It also reminds them that, upon retirement, they become lifetime members of the Employees' Association.

If you are planning an employee's farewell event, please notify our office and we will prepare a package that includes a framed certificate and a pen. If possible, a Board Director of the Employees' Association will present the certificate!

**To order, e-mail Brittany Rios at least two weeks in advance at [brittany.rios@ladwp.com](mailto:brittany.rios@ladwp.com)**

**LOS ANGELES WATER AND POWER EMPLOYEES' ASSOCIATION  
DISCOUNT SAFETY SHOE and EQUIPMENT PROGRAM**

LADWP employees assigned to a position requiring safety shoes or equipment may participate in this program. The vendors listed below provide discounted pricing for the purchase of safety shoes and equipment that can then be repaid in three convenient payroll deductions.

**Guidelines:**

- ◆ Your supervisor must complete an authorization form allowing you to purchase shoes under this program. An application provided by you or the vendor must also be completed at the time of purchase to authorize automatic payroll deduction.
- ◆ A maximum of two pairs of safety shoes can be purchased in any twelve month period.
- ◆ Twelve pairs of socks may be purchased along with each shoe purchase, up to a limit of twenty-four pairs in any twelve month period.
- ◆ Please check with your supervisor for a list of program approved equipment.

**Discounted footwear is available through the following vendors:**

**Industrial Safety Shoe**

Huntington Park (323) 587-0293  
 Santa Ana (714) 796-1976  
 Walnut (909) 594-1203  
 Wilmington (310) 549-6469

**Shoeteria**

Anaheim (714) 776-7299  
 Commerce (323) 948-5800  
 La Puente (626) 336-4560  
 Norwalk (562) 864-4422  
 Ontario Mills (909) 980-0977  
 Torrance (310) 921-9811

**Red Wing Shoe Stores**

Burbank (818) 842-4910  
 Commerce (323) 721-9222  
 Covina (626) 966-3114  
 Culver City (310) 839-3271  
 Westminster (714) 898-1106

El Monte (626) 444-8111  
 Fontana (909) 823-0042  
 Lancaster (661) 949-0898  
 Las Vegas (702) 598-0223  
 Long Beach (562) 426-6898  
 Norwalk (562) 864-2411  
 Pasadena (626) 792-9181  
 Santa Clarita (661) 799-7710  
 Torrance (310) 371-5068  
 Upland (909) 931-4018  
 Whittier (562) 695-1612

**Sun's Red Wing Shoe Stores**

Los Angeles (213) 625-8246

**Work Boot Warehouse**

Canoga Park (818) 703-8498  
 Newhall (661) 259-1978  
 North Hollywood (818) 753-8747  
 San Bernardino (909) 890-2590

**WorkWear Express**

Granada Hills (818) 831-9675

**Equipment is available from the following vendor:**

**Kathco Products**  
 6090 Triangle Drive  
 City of Commerce, CA 90040  
 (323) 728-1030

For additional questions regarding this program, please contact:  
 Jacquie Mendez at (213) 36-73163



## Up to 40% Savings! \$15 Unlimited Ride Passes available through DWP

LA'S ONLY ADMISSION-FREE AMUSEMENT PARK



- 12 Exciting Rides ■ Fun Midway Games
- Great Food & Entertainment
- Birthday Packages ■ Plenty of Parking

 /pacificpark  
  @pacpark  
  /pacpark  
  /pacpark

**(310) 260-8744** [pacpark.com](http://pacpark.com)

380 Santa Monica Pier, 90401

©2013 Santa Monica Amusements. All rights reserved.



## For your Monterey Bay Aquarium PREFERRED TICKETING

### Just follow these steps:

- Step 1:** Log onto <https://affiliate.montereybayaquarium.org>
- Step 2:** Enter the store name listed below in the Store login box.
- Step 3:** Pay for your tickets with Visa, Mastercard, American Express, or Discover and print your tickets in the convenience of your home.

**Company:**  
Los Angeles Department of Water & Power

**Store Name:**  
LADWP1001

**Website:**  
<https://affiliate.montereybayaquarium.org>

**Company Contact:**  
213-367-3144

# SAFETY SHOE SUPERVISOR AUTHORIZATION FORM

## Los Angeles Water and Power EMPLOYEES' ASSOCIATION, INC.

111 N. Hope Street, Room A-17 Los Angeles, CA 90012-2694  
Phone: (213) 367-3146 Fax: (213) 367-3286

To whom it may concern:

\_\_\_\_\_ is a participant in the Employees' Association  
(print employee's name clearly)  
Safety Shoe Program. Please only provide the type of safety shoe identified by the supervisor below.

Thank you for your participation in this program.

Sincerely,

The Los Angeles Water and Power Employees' Association Board of Directors

I, \_\_\_\_\_ am the supervisor of the requesting employee, and  
(Print supervisor's name clearly)

have reviewed their work conditions. It has been determined that the work conditions do require foot protection.  
{OSHA 1910.136: "The employer shall ensure that each affected employee uses protective footwear when working in areas where there is a danger of foot injuries due to falling or rolling objects, or objects piercing the sole, and where such employee's feet are exposed to electrical hazards}.

The following safety shoe is adequate for these working conditions:  
{Supervisor initials only one type of safety shoe that the employee is authorized to purchase. Initialing two (2) types invalidates the request.}

ASTM F2413-05 Standard Specification for Performance Requirements for Foot Protection and meet ASTM F2412-05 Standard Test Methods for foot protection.

- \_\_\_\_\_ Non-protective toe safety work shoes\boots that meet ASTM F2413-05  
\_\_\_\_\_ Protective reinforced toe safety work shoes\boots that meet ASTM F2413-05  
\_\_\_\_\_ Climbing boots that meet ASTM F2413-05

\_\_\_\_\_ Date: \_\_\_\_\_  
(Signed by supervisor in blue ink)

### Shoe vendors only:

Only one shoe type can be initialed. If there are two (2) or more types initialed this form is invalid and the request will be denied.

- This letter indemnifies the shoe store from liability for the above named employee only
- The form is only good for one purchase of (two pair maximum) safety shoes per year
- Modified or duplicated documents are not acceptable (whiteout, change of name, etc.)
- Purchase receipt must be dated within 30 calendar days of date of supervisor's approval
- Only one purchaser may use this document
- You must submit this document with all other paperwork when requesting reimbursement

**WE WILL NOT PAY INVOICES WITHOUT THIS DOCUMENT ATTACHED**

# Premiere Super Saver Movie Ticket

ADMIT ONE



# REGAL

---

## ENTERTAINMENT

---

# G R O U P



**EDWARDS**  
THEATRES

Visit [www.REGmovies.com](http://www.REGmovies.com) for showtimes and locations.

**TICKETS ARE AVAILABLE AT THE EMPLOYEES' ASSOCIATION**

## Need to Rent A Car?

*The Employees' Association has these rental car discounts available:*



Discount Code # is 1459157  
1 (800) 654-3131



Discount Code # is Z566497  
1 (800) 527-0700



# Alamo

Discount Code # is 527660  
1(800) 354-2322



**&**  
**RentalCars.com**

Discount Code # is 32W2624  
(800) 593-0505

\*If reserving online a 3-digit code  
is also required : DWP

\*Due to seasonal discounts offered by rental companies, these corporate discount programs may not provide the lowest rate available.

# CLASSIFIED ADVERTISING

LOS ANGELES WATER AND POWER EMPLOYEES' ASSOCIATION REPORT

**GUIDELINES:**

**Only Employees or Retirees May Submit Ads**  
Please do not submit ads for relatives, friends, or neighbors.

**No Charge on Free Ads of Twenty-five (25) Words and Under**  
A 25¢ charge applies to each word over the limit.

**One Free Ad Per Publication for Items such as, Automobiles, Furniture, Electronic Equipment**  
You may submit one free ad per publication for most items and non-business services and those categories noted below.  
There is no limit on the number of paid ads.

**Ads Must Renew Every Month**  
Continuous advertising requires the completion of a new application each month.

**Paid Ads Include Rental Property, Real Estate, Services, Fundraisers**  
\$10 per ad, up to twenty-five (25) words, plus 0.25¢ each word over twenty-five (25)

**Ads Must Be Legitimate**  
Our review committee reserves the right to refuse or limit the publication of any advertisement.

**All Application Information Must Be Complete and Legible**

**Place only Your Name Within the Ad**  
Your name must appear in the ad and you must be listed as the contact person.

**Ads Must Include a Non-LADWP Contact Number With Area Code**

**Deadline to Submit Ads is the First Day of Each Month for the Following Months Publication**

	<b>Fee</b>		<b>Fee</b>		<b>Fee</b>
COMMUTER	<input type="checkbox"/> Free	RENTAL PROPERTY	<input type="checkbox"/> \$10.00	FUND-RAISER	<input type="checkbox"/> \$10.00
TRANSPORTATION	<input type="checkbox"/> Free	REAL ESTATE	<input type="checkbox"/> \$10.00	MISCELLANEOUS	<input type="checkbox"/> Free
WANTED	<input type="checkbox"/> Free	SERVICES	<input type="checkbox"/> \$10.00	OVER 25 WORDS	<input type="checkbox"/> \$_____

NAME \_\_\_\_\_ EMP. # \_\_\_\_\_ WORK PHONE \_\_\_\_\_

IF RETIREE, HOME PHONE # \_\_\_\_\_ ADDRESS \_\_\_\_\_

SIGNATURE \_\_\_\_\_ DATE \_\_\_\_\_

Please type or print your ad **exactly** the way you want it to appear: **(Including contact name & phone number)**

\_\_\_\_\_

\_\_\_\_\_

\_\_\_\_\_

**Send application to:**  
Los Angeles Water and Power Employees' Association  
General Office Building, 111 N. Hope Street, Room A-17  
Los Angeles, CA 90012  
(213) 367-3146

**For Office Use Only**

Approved for Month of: \_\_\_\_\_

Fee received: \$ \_\_\_\_\_

*Place time stamp here*



LADWP and City Employees SAVE!

T-Mobile Advantage™ Program

# Keep your money.

# We insist.

## Limited-time offer

At T-Mobile®, we make it easy to afford what you really want. No money down. No annual service contracts. No overage worries. Just the hottest devices from major brands and all the power of T-Mobile's ultrafast nationwide 4G LTE network.

Act now to start enjoying your special **15% Advantage™ discount** on our Simple Choice plans.

## Switch today and save!



Call Advantage Direct™ at **1-866-464-8662** and use promo code **387TMOFAV**

Discount on lines applies to up to five lines.

Contact [Jonathan.Cardona7@T-Mobile.com](mailto:Jonathan.Cardona7@T-Mobile.com) or 661-373-3107 for assistance

**Device pricing for well-qualified customers:** 24 monthly payments required. If you cancel wireless service, remaining balance on phone becomes due. LG G2: \$0 down and \$25/mo., total \$600. 0% APR O.A.C. Examples shown reflect the down payment and monthly payments of our most creditworthy customers for these devices; amounts for others will vary.

Capable device and qualifying service required for LTE. Featured devices may not be LTE. Limited-time offer, subject to change. Taxes and fees additional. Not all features available on all devices. **Unlimited talk & text features for direct U.S. communications between 2 people.** **General Terms:** At participating locations. Domestic only. Credit approval, deposit, and \$10 SIM starter kit may be required. **Monthly Discount:** Limit five lines. All lines must be activated in same T-Mobile market with same billing address and area code. Discount subject to change. Not available in Puerto Rico. Discount applied to recurring charges while customer remains eligible and does not apply to overage, long distance, roaming, taxes and fees, or other charges. **Equipment Installment Plan:** Availability and amount of EIP financing **subject to credit approval.** Down payment and unfinanced portion required at purchase. Balance paid in monthly installments. Must remain on qualifying service in good standing for duration of EIP agreement. If you cancel wireless service, remaining balance on phone/device becomes due. Taxes and late/non-payment fees may apply. Participating locations only. Not available in Wash., D.C.; see participating locations in MD or VA. Example(s) shown reflects the down payment and monthly payments of our most creditworthy customers; amounts for others will vary. Pricing applicable to single device purchase. Device and screen images simulated. **Coverage** not available in some areas. **Network Management:** Service may be **slowed, suspended, terminated, or restricted** for misuse, abnormal use, interference with our network or ability to provide quality service to other users, or significant roaming. See brochures and **Terms and Conditions (including arbitration provision)** at [www.t-mobile.com](http://www.t-mobile.com) for additional information. LTE is a trademark of ETSI. Sony and Sony Xperia Z are registered trademarks of Sony Corporation. Advantage is a trademark of T-Mobile USA, Inc. T-Mobile and the magenta color are registered trademarks of Deutsche Telekom AG. © 2014 T-Mobile USA, Inc.

# NOTARY SERVICES

Available in your Employees' Association Office, Room A17

\* Must Present Acceptable Identification



## ACCEPTABLE IDENTIFICATION

- ✓ Current driver's license or non-driver's identification card issued by the California Department of Motor Vehicles, or a driver's license officially issued in Mexico or Canada
  - \* An expired California driver's license is acceptable only with a current extension card
- ✓ U.S. Passport or Foreign Passport stamped by the U.S. Immigration & Naturalization Service (INS)
- ✓ U.S. Military ID
- ✓ Resident Alien ID or "Green Card" issued by the INS (only for notarization of INS forms)



## UNACCEPTABLE IDENTIFICATION

- ✓ Employee or Retiree badge/card
- ✓ Temporary driver's licenses (even if issued by DMV)
- ✓ Credit Cards
- ✓ Driver's licenses without photographs
- ✓ Social Security Card

Only \$5.00 per signature

## CALL FOR AN APPOINTMENT

Jessica Sorino (213) 367-3143 or Jacquie Mendez (213) 367-3163

# THE CLASSIFIEDS

Are you looking for more riders for your vanpool or would you like to sell your car? Advertise in the Association Report!

For more information contact Yvonne Hernandez at (213) 367-3144.

## VANPOOLS

**SHARE THE RIDE! JOIN A VANPOOL, CARPOOL OR SIGN UP FOR TRANSIT AND RECEIVE A MONTHLY SUBSIDY. VISIT THE CARS OFFICE (JFB, A-16) FOR MORE INFORMATION!**

### SAN FERNANDO VALLEY COMMUTERS:

Share the vanpool from Winnetka to JFB! Meet/Arrive/Depart times: 5:40/6:15/4:00/5:00. 1st Fri ASDO. Contact: Greg Reed at (213) 367-2117

**VANPOOL:** Need new riders. From Granada Hills and Northridge to Scattergood Generating Station. Stops at West LA Service Yard. 6:00 a.m. – 3:30 p.m. Contact: Uly Aquino (310) 524-8502

**VANPOOL #571:** Looking for drivers for Palmdale/Lancaster area to Civic Center. 9/80 schedule – 6:30 a.m. – 4:00 p.m. contact: Scott Carpenter (661) 917-7398

**VANPOOL #16:** From Lomita to JFB and Main St. (5 days/week) Pick up point: Lomita Library at 5:45 a.m. Return Point: Lomita Library 4:55 p.m. Work Schedule: 6:15 a.m. – 4:15 p.m. (Mon-Thurs) 6:15 a.m. – 3:15 p.m. Contact: Lam Ho (213) 367-3036

**VANPOOL #43:** Glendora to JFB. 6:45AM-4:30PM. Contact Vishal (213) 367-4553

**VANPOOL #130:** From Chino Hills to JFB 6:30am-4:00pm DRIVERS ONLY. Contact: Roger Callo (213) 367-2625 or Roger.Callo@ladwp.com

**VANPOOL #112:** Looking for drivers for Palmdale/Lancaster area to JFB. 9/80 Schedule- 6:30 A.M. to 4:00 P.M. Contact: Bruce Collins (213) 367-5914 or bruce.collins@ladwp.com

**VANPOOL #20:** Looking for new riders. From Camarillo to Northridge. 6:30AM-4:00PM. Contact: Adolfo (213) 792-6332

**VANPOOL #39:** Chino to JFB. 6:00AM-3:45PM. Contact: Charnpreet Dhillon (213) 367-0170

**VANPOOL #44:** Rancho Cucamonga, Fontana, Rialto area to Main St. 6:00AM-3:30PM Contact: Antonio Daisley (213) 367-7569

**VANPOOL #95:** Looking for new riders from South Bay. Leave Artesia/Aviation to JFB. 6:45AM-4:30PM Contact: George (213) 367-4172

**VANPOOL #156:** Looking for new riders. From Lancaster to Mojave. 7:00AM-5:30PM Contact: John Misustin (661) 824-7918

**VANPOOL #14:** Looking for riders, DON'T NEED TO DRIVE. Fullerton/Buena Park are to JFB, runs everyday 6:30 a.m. – 4:10 p.m. (Fridays 3:10 p.m.) Contact: Ruben Aceves (213) 367-2503

**WANTED VANPOOL/CARPOOL:** From RSM Irvine Area to Palms Yard/Wester Water 9/80 Shift. Contact: Demetrius (213) 792-4150 or (949) 374-9025

**CARPOOL:** From Cypress/Buena Park to JFB. 9/80 schedule. Contact: Gene (213) 367-3469.

**CARPOOL:** From San Bernardino Mountains to: Rialto, Rancho Cucamonga, Claremont, La Verne, San Dimas, Irwindale, Baldwin Park, El Monte, Rosemead, Monterey Park, Downtown L.A. Shift 6:00 a.m. – 2:45 p.m. M-F, one-ways, etc. Cheap cost. Contact: Yolanda (909) 744-7006

**CARPOOL:** From Cypress/Buena Park/West Anaheim to JFB & Lincoln Heights. 9/80 schedule. We use our own car. Contact Allan (213) 367-6274

**CARPOOL:** From Arleta (SF Valley) to the JFB, 7 a.m.-4:45p.m. Shift 9/80 schedule. Rotate using own car. Contact: Silvia (213) 367-1517

**CARPOOL:** From West Covina to JFB (6:30-3:30p.m.) 1st Monday ASDO. Take turns driving. Contact: Minh (213) 367-4488

**CARPOOL:** From San Pedro to the JFB 6:30a.m.-4:00p.m. Shift 9/80 schedule. Rotate driving using own car. Contact: Maria Sharma (213) 367-1935

**CARPOOL:** From Rialto, Fontana, Rancho to Water Temple 6:00AM-3:30PM, 9/80 schedule. ASDO Monday-using our own car and rotate driving. Contact: Clyde Ignacio (909) 297-9118

**CARPOOL:** From Simi Valley to JFB. 6:30 A.M – 4:00 P.M. 9/80, Contact Pat (213) 367-5294 or (805) 813-2067

## TRANSPORTATION

**2013 HONDA CIVIC:** Only 250 miles! Asking for \$22,000 OBO. Contact: Shirley Brown (310) 613-1759.

**1998 CHEVROLET SUBURBAN:** Great condition, no accidents/pets/rust, non-smoker, garaged, 100,500 miles, original owner, maintenance records. \$3,500 OBO Contact: Derrick (562) 926-9686

**2012 23'FT SANDSTORM, RIVER FOREST TOY HAULER:** Includes A/C, fuel tank & pump for toys, generator, flat screen tv, speakers in & out, sleeps 10. \$20,000 OBO Contact: Yvonne (818) 465-3098

## MISCELLANEOUS

**FREE:** Music organ & bench to school, church or charity. Contact Nguyen (909) 598-4612. Must pick up from Walnut.

**FOR SALE:** Chocolate Labrador Pups – AKC-OFA-Dew Claws and 1st shots - \$750. Contact: Dave (661) 305-6183

**FOR SALE:** LA Dodgers kid rocking chair with chalk board, table and eraser, like new. \$14 set OBO Call Lin (626) 375-3822

# T.Y. WELLNESS CENTER

ACUPUNCTURE • HERBAL MEDICINE / SUPPLEMENTS

Experience the Benefits!  
"HERBS"



Indigestion/Heartburn



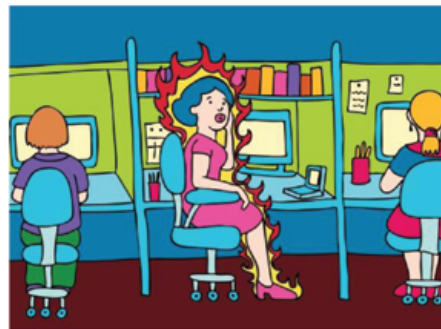
Energy/Immune system



ALLERGIES



Constipation



Menopausal Syndrome

Hot Flashes / Night Sweats / Anxiety



Insomnia

Anxiety/Depression

\* Affordable

\* Safe

\* Natural

\* High Quality

Administered and Processed under FDA cGMP Guideline

Made in USA

Manufactured by Healthcare Professional with Highest Quality Control

☎ **213 - 621 - 2652** ☎

706 W 1ST STREET, LOS ANGELES, CA 90012 (NEXT TO SUBWAY)

## CLASSIFIED ADS

# ADVERTISE IN THE ASSOCIATION REPORT!

FOR IMAGE ATTACHMENTS- PLEASE ADD \$10 IMAGE FEE OPTION

FOR MORE INFORMATION CONTACT (213) 367-3144

**FOR SALE:** Designer shoes women size 8 ½ and 9, new and old, slightly worn excellent condition, prices range from \$30 - \$60. Contact LaWanda (909) 921-2174

**DODGER TICKETS FOR SALE:** Reserve section 23, Row T, seats 10-11. Call David (562) 413-7411

**FOR SALE:** Burley bike trailer, good condition, 100 lbs. capacity, fits two children, harnesses, pockets, zippered top, folds flat, 20" wheels. Contact: Derrick (562) 926-9686

**FOR SALE:** Aero Pilates Reformer 266 - \$550; Bodyblade - \$75 OBO. Both new! Contact: Maria (310) 936-4853

**FOR SALE:** Dark brown leather sofa, chair and ottoman with baseball glove stitching. Excellent condition - \$700 Free choice of pillows. Contact: Cil (323) 654-5551

## RENTAL PROPERTY

**FOR RENT:** Newly remodeled small 1-bedroom house, washer & dryer hookups. 10 minutes East of Downtown L.A. Call Rachel: (323) 262-5871

## REAL ESTATE

**FOR SALE:** Mojave House - 4 bedroom, 2 bath, split floor plan, newer carpet, bathrooms, 30x40 shop/garage, 2 ½ acres in town, 1 mile from DWP yard, mature shade trees. \$184,000 Contact: Sam (661) 824-5273

**GET PAID TO TALK \$\$...** By referring a friend or family that wants to buy or sell a property now!! For more information call Desmond @ (909) 348-4813.

**THINKING OF BUYING OR SELLING PROPERTY??** I can help you save thousands in fees & cost, as well as help make your 1st payment...Call now! (909) 348-4813. Ask for Desmond. Broker Lic. #01423537

## SERVICE

**UTILITY SERVICES SPECIALIST STUDY GROUP FORMING:** Will meet Mondays and Wednesdays after work, 5:00 p.m. - 7:00 p.m. in conference room 773. Fernando De La Luz (562) 481-0810

**AA CIVIC CENTER PARTICIPATION:** Meeting every Thursday at 4:30 p.m.

and Fridays at 12:00 p.m. at JFB, room A-18A. Contact: Ricardo (323) 660-9035

## WANTED

**WANTED:** Box Tops for education. Please send to Nancy Fairbanks at 14401 Saticoy St, Building 3. Thanks

**BOX TOPS FOR EDUCATION.** Please send to Norma, JFB Room 424. Thank you.

**TOASTMASTERS INTERNATIONAL:** Water and Power Toastmasters Meet Every Wednesday 12:00-1:00 in Room 1171 and last Wednesday in room 1471. Contact: Mike (213) 367-2683 [www.toastmasters.org](http://www.toastmasters.org)

**WE NEED VOLUNTEERS:** To help with Adopt-A-School Reading Program. Seeking active or retired DWP employees. Contact: Elisa (213) 367-3811

**WE NEED CHILDRENS BOOKS:** First through fifth grade for Union Elementary School. Donate your children's old books to our Adopt-A-School Reading Program. For donations or information contact: Elisa Reynolds (213) 367-3811

## See Something You Like?



It's Simple.

For over 40 years, literally thousands of Californians have saved money by using

**The Red Book Fleet Discount Program.**

It's incredibly **Fast**, **Easy** and absolutely **Free**.

Are you in the market for a New Car, Truck, Van or SUV?

**The Red Book**

Don't Believe Us?

No Problem.

**(800) 422-4561 • [redbook4autos.com](http://redbook4autos.com)**

See the display in the Employees' Association A17

© Serve-All Marketing, Inc. & Salesmasters, Inc. Serving customers with The Red Book Program since 1966.

# The Law Office of Michelle S. Short-Nagel, Esq

(Former DWP Employee)

- Divorce & Paternity Issues
- Child Custody Matters
- Child & Spousal Support  
Modifications  
(Former Child Support Services D.A.)
- Free Consultation And Reduced  
Rates For DWP Employees



21820 Burbank Blvd., Suite 201 \* Woodland Hills, California 91367-6476

Phone: (818) 884-3000 Fax: (818) 884-3010

Also Available for Criminal Matters & DUI



Some  
decisions  
are too  
important  
to wait...  
So don't.

- Wills
- Trusts
- Estate Planning
- Probate
- Power of Attorney
- Free Consultation  
And Reduced Rates  
For DWP Family  
And Friends



The  
Law Office  
of  
Julie Clary

21820 Burbank Blvd., Suite 201  
Woodland Hills, CA 91367-6476  
(818) 884-9700

Please come visit us at:  
[www.ClaryLaw.net](http://www.ClaryLaw.net)

End Of The Year Special - Complete Trust Package - Additional 10% Off!

# ROUGHING IT

AXE	T	B	O	N	E	L	R	A	E	G	G	N	I	H	S	I	F	E	R
BACKPACK	X	E	I	L	S	C	S	N	T	A	R	A	E	G	N	I	A	R	C
BINOCULARS	A	X	S	N	I	B	N	I	B	I	N	E	G	R	E	K	S	E	N
CANOE	R	A	U	C	O	T	G	G	N	N	K	F	I	C	F	E	E	S	R
CANTEEN	P	A	N	O	F	C	N	O	C	S	P	D	P	B	I	P	H	E	E
CHUCK BOX	F	E	S	O	L	I	U	E	K	E	A	O	I	A	N	K	C	E	H
COMPASS	L	P	C	L	P	E	A	L	E	C	R	X	N	A	K	A	T	V	N
COOLER	N	E	R	E	I	A	A	N	A	T	T	I	O	O	T	A	A	O	A
FIRST AID KIT	L	C	E	R	A	T	E	B	A	R	S	N	C	B	E	S	M	N	G
FISHING GEAR	L	L	E	T	H	E	A	B	N	E	S	E	E	R	K	U	R	C	I
FLASHLIGHT	S	E	N	I	T	C	L	A	C	P	N	L	E	T	C	C	C	I	S
INSECT REPELLENT	C	C	N	N	K	E	E	F	C	E	O	R	A	O	O	A	U	C	F
LANTERN	T	H	A	P	S	I	R	E	G	L	I	I	I	N	P	F	A	H	A
MATCHES	E	C	A	T	F	L	A	S	H	L	I	G	H	T	T	N	G	A	C
POCKET KNIFE	I	C	O	F	E	I	A	B	I	E	R	T	G	O	O	E	N	L	A
PORTABLE STOVE	K	V	T	S	R	R	F	E	X	N	I	G	N	E	E	P	R	A	T
RAIN GEAR	E	C	O	M	P	A	S	S	E	T	T	E	N	L	K	A	E	N	E
SLEEPING BAG																			
SUNSCREEN																			
TARP																			
TENT																			

Camping is an outdoor recreational activity that people of all ages enjoy. For some, there is something special about connecting with the great outdoors and enjoying a bit of nature. There is nothing better than escaping the hustle and bustle of everyday life and living amongst wildlife in its natural habitat. Many people make annual camping trips and in so doing create lasting memories for years to come.

3	7	1	9	5	2	8	6	4
2	9	6	7	8	4	5	1	3
5	4	8	3	1	6	7	2	9
7	2	4	1	6	9	3	8	5
6	5	3	8	2	7	9	4	1
8	1	9	5	4	3	6	7	2
1	3	7	2	9	8	4	5	6
4	8	5	6	3	1	2	9	7
9	6	2	4	7	5	1	3	8

Answers to May's puzzle

**RAFFLE WINNERS FOR**

**APRIL  
2014**

**Bingbing Zhang**

**Martha Manriquez**

**Clint Roberts**

**Traci Tapp**

**Here's How You Can Be  
Our Next Winner:**

- 1st - Make any purchase from the Employees' Association Office or your Association Representative.
- 2nd - Write your name and phone extension on a raffle ticket (1 per \$ 20.00 purchase). Drop in the raffle box or give to your Association representative.
- 3rd - At the beginning of every month a drawing is held from all raffle tickets turned in for the previous month.
- 4th - Show Department identification for your prize.
- 5th - You have 2 weeks to claim your prize!

**It's That Simple.....**



**Employees' Association Report  
Is Now Available Online**

**Visit Our Intranet  
Home Page**

<http://hrweb>

**Click on:**

**Employees' Association**

# Don't miss this chance for discounts on health and wellness services!

# Colonial Life<sup>®</sup>

## We are pleased to offer LADWP employees a free WellCard discount card.

### Schedule a 1-to-1 benefits counseling session to receive your card and start enjoying discounts!

The Wellcard discount card can save you and your family money on:

- Doctor office visits
- Prescription drugs
- Dental, vision and hearing products and services
- Lab work, MRIs and X-rays

It also provides access to the following programs including:

- 24/7/365 doctor telephone consult
- Medical bill help
- Free online health library
- Cash rewards mall and more!

### During your 1-to-1 session, your benefits counselor can also review your benefits and the Colonial Life coverages available:

- Accident insurance
- Disability insurance
- Hospital Confinement Indemnity insurance
- Cancer insurance
- Critical Illness insurance
- Life insurance

The Wellcard discount program is powered by AccessOne Consumer Health, Inc., 84 Villa Rd, Greenville, S.C. 29615, [www.accessonedmpo.com](http://www.accessonedmpo.com). This is not a Part D Medicare prescription drug program. This is not insurance and is not intended to replace insurance. Discounts are only available at participating pharmacies and providers. Payment must be made at the time of service to receive discounts from participating providers. Void where prohibited by law.



### Schedule your 1-to-1 today to receive your Wellcard and ensure you have the benefits coverage you need.

- **Mario Houston**  
[Mario.Houston@coloniallife.com](mailto:Mario.Houston@coloniallife.com)  
818-681-7614 – Ca Lic#0C25151
- **Terry Hunt**  
[Terry.Hunt@coloniallife.com](mailto:Terry.Hunt@coloniallife.com)  
310-855-4099 – Ca Lic#0G28748
- **Vivica Keyes**  
[Vivica.Keyes@coloniallife.com](mailto:Vivica.Keyes@coloniallife.com)  
310-850-0587 – Ca Lic#0E65887
- **Maria Johnson**  
[Maria.Johnson@coloniallife.com](mailto:Maria.Johnson@coloniallife.com)  
714-785-1247 – Ca Lic#0C98727
- **Robert Spearman**  
[Robert.Spearman@coloniallife.com](mailto:Robert.Spearman@coloniallife.com)  
310-346-5291 – Ca Lic# 0D23078
- **Shari Rosemblat**  
[Shari.Rosemblat@coloniallife.com](mailto:Shari.Rosemblat@coloniallife.com)  
323-933-2522 – Ca Lic# 0C03059
- **Marsha Dansby**  
[Marsha.Dansby@coloniallife.com](mailto:Marsha.Dansby@coloniallife.com)  
626-712-5834 – Ca Lic#0D55903

© 2013 Colonial Life & Accident Insurance Company  
Colonial Life products are underwritten by Colonial Life & Accident Insurance Company, for which Colonial Life is the marketing brand.

# MUTUAL BENEFIT PLAN

A BENEFIT YOU CAN COUNT ON!



## WHAT IS THE MUTUAL BENEFIT PLAN?

The Mutual Benefit Plan is a low cost death benefit coverage offered by your Employees' Association. The Plan is designed to provide expeditious payments to the designated beneficiary of both active and retired Los Angeles Department of Water and Power employees.

## REASONS TO JOIN THE PLAN

- Immediate 50% Payment to the Beneficiary
- Benefit is Non-taxable
- Your Coverage Will Never Be Reduced or Canceled because of age or health

## HOW DO YOU PAY FOR THE PLAN?

Monthly payments are automatically payroll deducted from employee's paycheck.

## EMPLOYEE BENEFIT

### Employee Coverage:

Applies to all active and retired employees enrolled in the Mutual Benefit Plan.

### Benefit Guarantee:

Your coverage will always remain the same as long as account is in good standing.

### No Medical Exam:

No medical exam is required to qualify, all you have to do is answer a few short health questions.

## SPOUSE BENEFIT

### Spouse Coverage:

Only applies to spouses of those employees enrolled in the Mutual Benefit Plan.

### Benefit in Force

Benefit will stay in force as long as the employee is currently enrolled in the Mutual Death Benefit Plan.

### Medical Exams:

A completed medical questionnaire is required with doctor's verification.

## DEPENDENTS

### Dependent Coverage:

Available for children ages 3 to 17 years old.

### Benefit in Force:

Benefit will stay in force as long as the employee is a member in good standing. Dependent's benefit will end when dependent reaches age 18.

### No Medical Exam:

No medical exam is required, just answer a short questionnaire.

## Employee / Spouse Membership Schedule

Plan Coverage	\$5,000	\$10,000	\$15,000	\$20,000
Monthly Membership Fees (based on coverage and age)				
Ages 16-34	\$0.55	\$1.10	\$1.65	\$2.20
Ages 35-44	\$0.90	\$1.80	\$2.70	\$3.60
Ages 45-54	\$2.05	\$4.10	\$6.15	\$8.20
Ages 55-64	\$5.25	\$10.50	\$15.75	\$21.00
Ages 65 & over	\$12.00	\$24.00	\$36.00	\$48.00

## Dependent Membership Schedule

Plan Coverage	\$5,000	\$10,000	\$15,000	\$20,000
Monthly Membership Fees (based on coverage and age)				
Ages 3-17	\$3.00	\$6.00	\$9.00	\$12.00

## ELIGIBILITY REQUIREMENTS

To be eligible for a \$20,000 membership, the employee or spouse must be 39 years or younger.

To be eligible for a \$15,000 or \$10,000 membership, the employee or spouse must be 49 years or younger.

To be eligible for a \$5,000 membership, the **employee** must be 59 years or younger

To be eligible for a \$5,000 membership, the **spouse** must be 49 years or younger.

- Employees cannot apply for this benefit after 59 years of age.
- Spouses cannot apply for this benefit after 49 years of age.
- All benefits are based on the employees' active membership to the Mutual Benefit Plan.
- The committee has final discretion in accepting applications.
- Application must be submitted 30 days before qualifying birthdate.

Visit or call your Employees' Association for more information (213) 367-3143