

LOS ANGELES WATER & POWER

EMPLOYEES'

ASSOCIATION REPORT

MAY 2015

YOUR VOICE MATTERS



**EMPLOYEES' ASSOCIATION
BOARD OF DIRECTOR ELECTIONS**
CANDIDATE STATEMENTS INSIDE

Low rates, no monkeying around.



Take me
home with
your loan.

At Water and Power Community Credit Union, we'll swing you into a low interest loan, fast and easy, with no monkey

business. You can qualify for a rate as low as **1.5%*** APR. We'll even give you 100% financing. And you won't have to make your first payment for 90 days. To get an auto loan any other way would be bananas.

As low as
1.5%*
APR
New or Used



Call (800) 300-9728
Click wpcu.org/autoloan
Or Visit your local branch

*1.50% APR is for highly qualified members. Actual rates will vary based on each member's credit score and ability to pay. Maintaining a deposit of \$25 in your primary savings account is required for membership. Other restrictions may apply.

TABLE OF CONTENTS

6 **KNOW YOUR
EMPLOYEES' ASSOCIATION**
FINANCIAL ASSISTANCE PROGRAMS

8 **DONORS' WELFARE PLAN
PARA LOS NIÑOS**

10 **FACTS & FIGURES**

11 **LADWP MERCHANDISE**

12 **TICKETS**

18 **ON THE COVER**
EMPLOYEES' ASSOCIATION BOARD OF
DIRECTOR ELECTIONS

22 **CRAFT**

23 **RECIPES**

26 **ASSOCIATION SERVICES**

32 **THE CLASSIFIEDS**
BUY, SELL, TRADE

**TUESDAY,
JUNE 30, 2015**

The Employees'
Association Office
will be open from
8:00 a.m. - 1:00 p.m.

**WEDNESDAY,
JULY 8, 2015**

The Employees'
Association Office
will close from
11:30 a.m. - 1:00 p.m.



LAWP EMPLOYEES' ASSOCIATION REPORT

A publication of your Los Angeles Water and
Power Employees' Association

Yvonne Hernandez Editor
Eric Botero Graphic Designer

Services Committee

Shirley Brown, Gale Harris, Yvonne Hernandez,
Manuel Minjares, Edward Rodgers,
Arlene Rodriguez, Willie Tam, Debra Turner

Employees' Association

General Information	(213) 367-3146
Association Report	(213) 367-3144
Ticket Office	(213) 367-3142
Donors' Welfare Plan	(213) 367-3142
Assistance Loans	(213) 367-3163
Medical Equipment	(213) 367-3163
Mutual Benefit Plan	(213) 367-3143
Safety Shoes	(213) 367-3163

Notary Services

Jacque Mendez	(213) 367-3163
Jessica Sorino	(213) 367-3143



MISSION STATEMENT:

The mission of the Los Angeles Water and Power Employees' Association is to support employees through specialized programs designed to enhance lifestyles and improve the quality of life for retirees, active employees, and their families.

ASSOCIATION INFORMATION

LOS ANGELES WATER AND POWER EMPLOYEES' ASSOCIATION

John Ferraro Building
111 North Hope Street, Room A-17
Los Angeles, CA 90012
(213) 367-3146 Fax (213) 367-3286

Office hours: Monday through Friday 8:00 a.m. to 3:30 p.m.

Serving employees and retirees of the City of Los Angeles and Department of Water & Power at locations throughout the Greater Los Angeles Area, Victorville, Owens Valley, Nevada, and Utah since 1933.

Board of Directors:

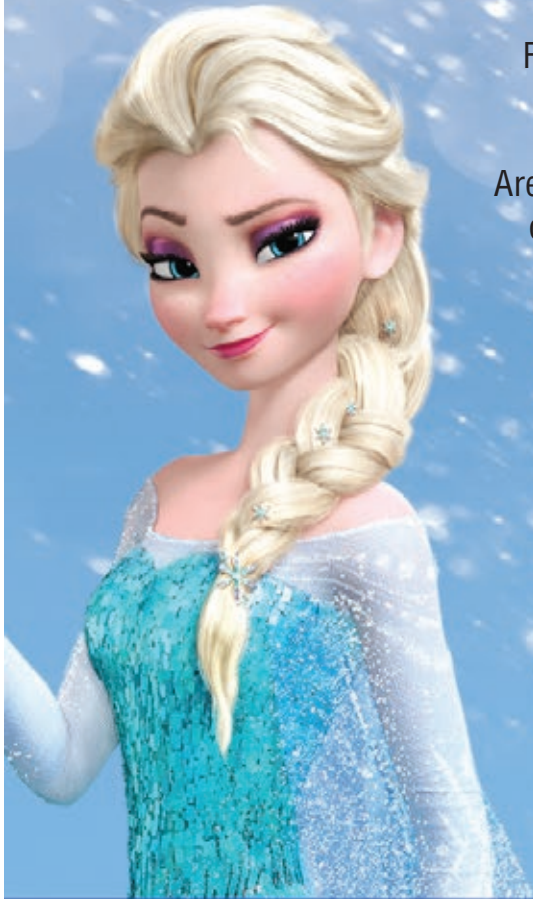
Joe Avila	Joint System
Ramiro Beltran	Retired Employees' Rep.
Shirley Brown, Executive Officer	Joint System
Fernando De La Luz	Joint System
Ann Marie De La Riva, President	Joint System
Bryan Grace	Association Director
Gale Harris	Joint System
Lisa Morrison-Kassel, VP	Joint System
Diana Lozano	Power System
Manuel Minjares	Power System
Edward Rodgers	Water System
Arlene Rodriguez	Water System
Willie Tam	Power System
Debra Turner, Secretary	Water System
Brian Wilbur	Power System
Matt Woodson, CFO	Power System
Anita Wright	Power System

- **We accept cash, Visa, MasterCard, and Discover. Sorry, no personal checks.**
- **It is the purchaser's responsibility to check ticket expiration dates and theme park operating hours.**
- **We reserve the right to limit the number of tickets sold to each Association member.**
- **There is a nominal surcharge on most tickets sold through the Association to help defray operational expenses.**
- **Ticket prices are subject to change without notice.**

Vendors are not endorsed by the Los Angeles Department of Water & Power or the Employees' Association.

Disneyland[®]

RESORT



For the first time in forever—but only for a limited time—**Frozen** Fun, live in *Disney California Adventure*[®] Park, transports you to the most magical place this side of Arendelle! Let your Frozen fandom go with a virtual avalanche of enchanting interactive experiences. But hurry and visit before it melts away!

Special E-Ticket Offer for **SO CAL RESIDENTS***

Available to buy through 5/14/15

Buy Multi-day Tickets Today!

Disney So. Cal Resident Offer!

**E-TICKETS
ONLY!**

2 Day – 1Day/1Park	\$129.27	3 Day – 1Day/1Park	\$157.17
2 Day Park Hopper	\$165.54	3 Day Park Hopper	\$193.44

Ages 3 & Over. Valid January 7 – May 14, 2015

*Tickets expire May 21, 2015. Blockout Dates of 3/20–4/4/15 apply. Valid only for Southern California Residents within ZIP Codes 90000–93599 and Northern Baja California Residents within ZIP Codes 21000–22999; proof of residency is required for purchase and admission. Subject to capacity, restrictions and change without notice.
©Disney DLR-15-38782-1



Hello Association Members,

Spring's arrival traditionally means new beginnings and brighter days. The warmth after winter's chill (in California, let's admit it, for us, 60° is parka weather) stimulating us to more activity than huddling inside to avoid the "harsh" weather.

Because time flies and there is always so much to do, those New Year's resolutions that had slipped away from us seem to resurface now. Those "extra" hours seem to offer more opportunity to tackle tasks that may have been postponed by cold weather; to carry out plans that were deferred until "we have more time," to take up projects that we just plain put off for no good reason.

Whether it means planting time for backyard gardeners like me, or clearing out and sprucing up the old homestead, just about everyone feels the impulse to make changes. I think that feeling makes us somewhat introspective, too. It's a good time to look around and assess what we really need and how we will spend our precious "off" time.

I would encourage planning your efforts for the most satisfying results. Whether it is a commitment to clean the garage or a bedroom closet, or working to improve yourself, making a plan and setting goals can provide you with a roadmap to success and satisfaction.

There are many great organizational resources online and even apps for your phone. Old school tools like checklists and boxes labeled "Keep" "Toss" and "Donate" are simple tools for getting objects or paperwork handled. Break down household or yard projects into task lists and delegate to the most appropriate member of the family (little ones love to help). Even on your own, it will help to have a list you can check off as items are completed.

Besides material clean up, this is a good time for personal assessment as well. Think about what is really important to you. Have you wanted to be more active, less sedentary? Schedule yourself to walk, bike or visit a gym. What about hobbies, other interests? Are you a "Gearhead"? Check around for car shows in the area or beyond. A road trip might be just what you need. Did you buy supplies for crafting that popped up when you cleaned out that closet? Dive in; let your creativity take flight. Then there is personal improvement. Whether intellectual, spiritual, or just for the pleasure of learning something new, give your mind a workout. Read, discuss, take a class, learn a new skill. Write a letter to someone you haven't seen for a while. Start a blog on a favorite topic of interest to you. You may find many others share that interest.

I think my main message is this: Make a plan to take action! Life is too short to let the days roll away without marking them with the simple joy of doing. Don't hesitate to take a big bite out of life. Remember, Auntie Mame said, "Life is a banquet and most poor suckers are starving to death!"

FINANCIAL ASSISTANCE

These are your Employees' Association's no cost and convenient financial assistance programs:

MEDICAL / DENTAL LOANS	Your Employees' Association can provide an interest-free, no cost, automatically payroll deducted loan for medical and dental procedures not covered by your health plan.
DEATH-IN-FAMILY LOANS	The death of an immediate family member can be devastating, but our staff will assist you in applying for an interest-free, no cost loan, automatically payroll deducted to cover funeral related expenses.
EMERGENCY LOANS	Emergencies seem to occur when we least expect them. If you are affected by an unforeseen financial hardship, we also have automatically payroll deducted interest-free, no cost emergency loans.
SAFETY SHOE LOANS & EQUIPMENT	Do you need safety shoes for your job? Your Employees' Association can provide an interest-free, no cost, automatically payroll deducted loan. Visit one of our approved vendors. Forms are available from the safety shoe vendor.
DISABILITY ADVANCES	Disability checks are sometimes delayed due to late medical certification or processing requirements. We can provide an early advance of up to 80% of the amount of your disability check.
DOWNED WORKERS PROGRAM	Our newest program assists family members of an employee that requires hospitalization after sustaining work related injuries. It allows a spouse or loved one to stay near the hospital by providing lodging and meal assistance

Who can apply for assistance?

All active employees on the Department payroll who have completed probation, or any LADWP retiree

How is a loan repaid?

Two and a half years, or sixty consecutive pay periods, following death-in-family and dental/medical loans advances ~
Three consecutive pay periods following emergency loans or safety shoe and equipment purchases

What types of requests will be considered?

Transportation or housing bills caused by an emergency ~ Non-covered dental or health expenses ~
Death-in-family funeral expenses

What type of documentation is needed to process an application?

Easy qualification process with NO CREDIT CHECKS! • Submit a completed loan application, a past due bill, medical/dental bill, written estimate from repair shop or other creditor information ~ Acceptable proof of the obligation or need ~ Copies of your two most recent pay stubs

When are loan applications due?

No later than Friday at 3:00 p.m. to be reviewed on the following Tuesday ~
Certain emergency requests are reviewed and approved in 24 hours or less

Who are checks made payable to?

Loan checks can be made payable only to the creditor, business or institution

Funding for these programs is made possible by your generous contributions to

THE DONORS' WELFARE PLAN

For more help with completing an application, or for questions, please contact:
Employees' Association, JFB Room A-17, (213) 367-3146

PLEASE SUPPORT YOUR DONORS' WELFARE PLAN!

Employees and retirees of LADWP have helped each other through difficult times by contributing to the Donors' Welfare Plan which has funded the Employees' Association since the early 1900s. The Donors' Welfare Plan relies on your compassionate assistance in order to continue providing programs that assist LADWP employees and retirees in times of need. These programs include:

-  **DEATH-IN-FAMILY, MEDICAL/DENTAL & EMERGENCY LOANS**
-  **EMPLOYEE CLUB & ORGANIZATION SUPPORT**
-  **SAFETY SHOES & EQUIPMENT LOANS**
-  **DOWNED WORKER PROGRAM**
-  **NURSING CARE GRANTS**
-  **DISABILITY ADVANCES**
-  **MEDICAL EQUIPMENT**

The facing page spotlights one of several employee recommended local charities supported by the Donors' Welfare Plan.

Please consider giving or increasing your current donation to become part of the LADWP tradition of helping others. Complete the information below and forward it to the Employees' Association. Remember, any amount helps and it is sincerely appreciated.



Los Angeles  Department of Water & Power

DONORS' WELFARE PLAN



LOS ANGELES WATER & POWER EMPLOYEES' ASSOCIATION

NAME	EMPLOYEE #	PAYROLL-SECTION
<p>PHILIP R. LEIBER CHIEF FINANCIAL OFFICER You are hereby authorized to deduct from my salary or wages that may be earned and become due me for all pay periods for which authorized deductions are made the amount initialed in the space provided and to pay same to the Los Angeles Water & Power Employees' Association for the Account of the Donors' Welfare Plan. This authorization will remain in effect until canceled by me in writing.</p> <p>Please return this card to: LADWP Employees' Association, 111 N. Hope Street, Room A-17, Los Angeles, CA 90012</p>		
<p>Thank you for your Donors' Welfare Plan support! Remember, your help is needed annually.</p>		
		INITIAL
1% OF BI-WEEKLY SALARY		DOLLAR AMOUNT
2% OF BI-WEEKLY SALARY		
WRITE IN AMOUNT TO DEDUCT		
INCREASE MY DONATION TO		
<p>The above contributions occur on 24 payroll periods per year.</p>		
SIGNATURE	DATE	<input type="checkbox"/> New Donor
<input type="checkbox"/> Check here for a ONE-TIME donation. Make check/money order payable to: Donors' Welfare Plan.		
<p>THANK YOU FOR ASSISTING ACTIVE AND RETIRED EMPLOYEES, AND THE LOCAL COMMUNITY!</p>		

PARA LOS NIÑOS

With a mission to help children and families succeed in school and in life, Para Los Niños (PLN) is closing the achievement gap for children living in extreme poverty. A rigorous education is at the core of our model. At every school site, PLN provides access to family support, mental health services, and parent engagement and skill building.

Young adults from the L.A. region applied for 12 competitive paid internships with the 2014 Bank of America Summer Youth Employment Initiative. Five of those internships were awarded to PLN participants from the Youth Workforce Services program. They will be placed at local branches and will be assisting customers as ATM

ambassadors. All of the interns will have to work on a project which they will be presenting to executives at the end of their internship. Congratulations to Bradley, Jocelyn, Alvaro, Nico and Carlos!

Para Los Niños would like to thank all the generous donors at the LADWP for the continuous donations to help the children and families of Para Los Niños.



PICK YOUR CARD

MATCH YOUR STYLE



LADOT PASSES AND TRIP TICKETS ARE NOW ON TAP

And LADOT has 4 limited edition TAP cards to choose from.....They all work the same way---What's your style?

- NO more paper passes or tickets will be sold
- Commuter Express Passes and Trip Tickets and DASH Passes will only be available on TAP cards
- DASH tickets will no longer be available, but stored value (cash) can be added onto TAP cards
- Also introducing new 31 day passes



BUS PASS

DESCRIPTION	PRICE
Base Pass	\$57.00
Zone 1 Pass	\$80.00
Zone 2 Pass	\$100.00
Zone 3 Pass	\$124.00
Zone 4 Pass	\$140.00

20 TRIP TICKETS

DESCRIPTION	PRICE
Base Pass	\$30.00
Zone 1 Pass	\$46.00
Zone 2 Pass	\$56.00
Zone 3 Pass	\$67.00
Zone 4 Pass	\$75.00

DASH DOWNTOWN OPERATES MONDAY - FRIDAY, EVERY 5-12 MINUTES

For more information visit: ladottransit.com or call the LADOT Transit Store at 213-808-2273.



EMPLOYEES' ASSOCIATION FACTS AND FIGURES

For more information, contact your Employees' Association office and join the Mutual Benefit Plan!

DONORS' WELFARE PLAN ASSISTANCE

6	Emergency Loans	\$8,409.54
0	Death in Family Loans	\$0.00
11	Medical/Dental Loans	\$26,722.76
1	Late Disability Advances	\$1,794.00
3	Nursing Care Grants	\$4,425.00
*	Benevolent Grants (Med. Equip)	\$531.61
42	Safety Shoes	\$9,362.31
2	Retirement Death Benefit Adv.	\$14,862.65
	Total:	\$66,107.87

Assistance made possible by your generous donations to the Donors' Welfare Plan.

MUTUAL BENEFIT PLAN MEMBERSHIP:

\$500.00	1	\$500.00
\$1000.00	123	\$123,000.00
\$2000.00	103	\$206,000.00
\$3000.00	1,019	\$3,057,000.00
\$4000.00	364	\$1,456,000.00
\$5000.00	1,522	\$7,610,000.00
\$10000.00	14	\$140,000.00
\$15000.00	496	\$7,440,000.00
<u>\$20000.00</u>	<u>419</u>	<u>\$8,380,000.00</u>
Total	4,061	\$28,412,500.00

DONORS' WELFARE PLAN

The Donors' Welfare Plan also funds the Dolls 'N' Toys program which provides gifts for underprivileged children during the holiday season. In addition, it supports numerous charities in Adelanto, Boulder City, Castaic, Mojave and the Owens Valley, and in Los Angeles County as noted below.

- Ahead with Horses
- Alisa Ann Ruch Burn Foundation
- Atwater Park Center
- Beacon Light Mission
- Blind Childrens Center
- Cancer Support Community
- Downtown Women's Center
- ECHO Horizon School
- Ettie Lee Youth and Family Services
- Free Arts for Abused Children
- Friends of the Family
- Guide Dogs of America
- Helping Young People Excel (HYPE)
- Independent Living Center

- The Jeffrey Foundation
- John Tracy Clinic
- Junior Blind of America
- Mariposa Women and Family Center
- Mary Magdalene Project
- Oasis Women's Recovering Community
- Optimist Youth Homes and Family Services
- Para Los Ninos
- Partners In Care Foundation
- Providing for Kids Foundation
- Rancho San Antonio Boys Home
- Southern California Rehabilitation Services
- Willie Ross Foundation

OFFICIAL LADWP LOGO MERCHANDISE



	Color	Size	Cost
Crewneck Sweatshirt	Black/Navy/Gray	S-XL	\$19.50
Crewneck Sweatshirt	Black/Navy	2XL	\$20.25
Men's Polo Shirt	Black/Gray/Light Blue	S-XL	\$26.00
Men's Polo Shirt	Black/Gray/Light Blue	2XL	\$28.00
Men's Pocket T-shirt	Black/Gray/Blue/White/ Green/Orange	S-3XL	\$14.75
Men's Long Sleeve T-shirt	Black/Navy/Gray/Sand	S-2XL	\$17.50
Men's Polo Shirt - Tipped	Navy/White	M-XL	\$32.00
Men's Polo Shirt - Tipped	Navy/White	2XL-3XL	\$34.00
Women's Polo	Green/Black	XS-XL	\$26.00
Women's Polo	Green/Black	2XL	\$28.00
Women's Polo - Tipped	Navy/White	XS-XL	\$32.00
Women's Polo - Tipped	Navy/White	2XL	\$34.00
Womens V-neck	Denim/Gray	S-XL	\$14.75
Kid's T-shirts	All colors	XS-XL	\$8.00
Mug w/spoon	Brown		\$5.50
Ball Caps	Black/ Navy/Gray	S/M & L/XL	\$9.25
Retirement Mug	Cobalt Blue w/gold	15 oz.	\$8.50
LADWP Mug	Cobalt Blue w/gold	15 oz.	\$8.50
Sports Bag	Black & Blue		\$18.50
Duffle Bag	Black & Grey		\$15.75
Lanyard	Black & Blue		\$4.00

SALES TAX NOT INCLUDED ON PRICES LISTED

TICKETS

THEME PARKS		Association Price	Regular Price	Savings	Expires
Adventure City	1 year & under free	\$13.50	\$16.95	\$3.45	None
Boomers All-Day Play Pass includes: unlimited golf & attractions. No blackout dates • Valid at 11 locations	General	\$17.00	\$29.99	\$12.99	None
Castle Park	General	\$14.00	\$19.99	\$5.99	9/13/15
Catalina Express (Blackout Dates Apply) Round trip transportation	Adult Child (2-11)	\$63.00 \$54.00	\$74.50 \$59.00	\$11.50 \$5.00	12/31/15 12/31/15
Disneyland - 1 Day 1 Park	Adult Child (3-9)	\$97.00 \$91.00	\$99.00 \$93.00	\$2.00 \$2.00	12/31/15
Golf 'N' Stuff	All Park Pass 2 Hour Unlimited	\$13.00 \$16.00	\$33.50 \$25.00	\$20.50 \$9.00	None
K1 Speed Zone 14 Lap Race Card + Drivers License	General	\$16.00	\$25.95	\$9.95	None
Knott's Berry Farm	Adult Child(3-11) / Seniors (62+)	\$38.00 \$31.00	\$62.00 \$35.00	\$24.00 \$4.00	12/31/15
LEGOLAND- 2nd Day Free!	Adult Child (2& under free)	\$72.00 \$67.00	\$85.00 \$79.00	\$13.00 \$12.00	1/4/16 1/4/16
LEGOLAND- Resort Hopper	Adult Child (2& under free)	\$77.00 \$72.00	\$109.00 \$103.00	\$32.00 \$31.00	1/4/16 1/4/16
Long Beach Aquarium of the Pacific	Adult Child (3-11)	\$19.95 \$12.95	\$28.95 \$14.95	\$9.00 \$2.00	11/30/15 11/30/15
Los Angeles Zoo	Adult Child (2-12)	\$17.00 \$14.00	\$18.00 \$14.00	\$1.00 n/a	None
Magic Mountain	General	\$43.00	\$64.99	\$21.99	09/27/15
Medieval Times	Adult Child (under 12)	\$43.50 \$33.00	\$57.95 \$35.95	\$14.45 \$2.95	None
Mulligans All Day Passes	General	\$16.00	\$23.99	\$7.99	None
Pacific Park – Santa Monica Pier	All ages	\$15.00	\$22.95	\$7.95	01/04/16
Pirates Dinner Adventure	Adult Child (3-11)	\$38.00 \$29.00	\$59.95 \$36.95	\$21.95 \$7.45	11/30/15 11/30/15
San Diego Zoo	Adult Child (3-11)	\$43.00 \$34.00	\$48.00 \$38.00	\$5.00 \$4.00	12/25/15 12/25/15
San Diego Zoo Safari Park	Adult Child (3-11)	\$43.00 \$34.00	\$48.00 \$38.00	\$5.00 \$4.00	12/25/15 12/25/15
Sea World - Single Day	Adult Child (3-9)	\$63.00 \$63.00	\$89.00 \$83.00	\$26.00 \$20.00	12/29/15 12/29/15
Sea World 2015 Fun Card	Adult Child (3-9)	\$77.00 \$76.00	\$86.00 \$80.00	\$9.00 \$4.00	12/31/15 12/31/15
SpeedZone	General	\$26.00	\$49.99	\$23.99	08/01/15

Visa /MasterCard accepted at the J.F.B. No personal checks! Tickets subject to availability/prices subject to change. Although the Employees' Association offers substantial savings on its tickets and merchandise, our price may not always be the lowest available. Employees' Association - J.F.B. Rm. A17, (213) 367-3146

MOVIES	Association Price	Regular Price	Savings	Expires
AMC Gold – unrestricted	\$8.50	\$13.50	\$5.00	None
AMC Movie Bundle Includes: 2 gold tickets, 2 small sodas, 1 small popcorn	\$26.00	\$39.99	\$13.99	None
Cinemark’s Platinum Supersaver – unrestricted Also valid at: Rave Cinemas, Century Theatres, Cine Arts and Tinseltown	\$8.75	\$11.75	\$3.00	None
Harkins Theatre – unrestricted	\$8.00	\$10.00	\$2.00	None
Krikorian Theatre – unrestricted	\$8.00	\$11.25	\$3.25	None
Laemmle – unrestricted	\$6.50	\$11.00	\$4.50	None
Pacific Theatres – restricted	\$8.50	\$10.75- \$14.75	Varies	None
Regal’s Premier SuperSaver – unrestricted*	\$8.50	\$13.50	\$5.00	None
Regal’s Ultimate Premier Movie Pack* Includes: 2 unrestricted passes, \$10 cert.	\$27.00	\$37.00	\$10.00	None
Regency Theatre – unrestricted*	\$7.50	\$12.00	\$4.50	None

*Regal Cinemas also valid at Edwards Theatres and United Artist

MISCELLANEOUS				
Forever Stamps – Book of 20	\$9.80	\$9.80	n/a	n/a
See’s Candies 1 lb certificates	\$15.50	\$18.50	\$3.00	n/a




TICKET & MERCHANDISE SALES LOCATIONS

For your convenience, your Employees’ Association representative is in Granada Hills every Tuesday from 11:30 a.m. - 3:15 p.m. to sell tickets and merchandise.

Water and Power Community Credit Union
16840 Devonshire Street (North Hills Plaza)
Granada Hills

For any merchandise requests please contact the Employees’ Association Office at 213-367-3146

E-TICKETS ON THE LADWP INTRANET

To access the site, enter hrweb on an LADWP computer/click on the Employees' Association link/click on Eticket Link/ Select your Theme Park Banner

THEME PARKS		Association Price	Regular Price	Savings
Disney 1 Day, 1 Park	Adult	\$95.04	\$99.00	\$3.96
	Child	\$89.28	\$93.00	\$3.72
Disney 1 Day Park Hopper	Adult	\$142.60	\$155.00	\$12.40
	Child	\$137.08	\$149.00	\$11.92
Disney 2 Day, 1-Park per day	Adult	\$168.35	\$185.00	\$16.65
	Child	\$156.52	\$172.00	\$15.48
Disney 2 Day Park Hopper	Adult	\$204.75	\$225.00	\$20.25
	Child	\$192.92	\$212.00	\$19.08
Disney - Southern California CityPass	Adult	\$305.10	\$339.00	\$33.90
	Child	\$266.40	\$296.00	\$29.60
Disney So. Cal Resident Offer!				
2 Day – 1Day/1Park	Ages 3 & Over	\$129.27	\$139.00	\$9.73
2 Day Park Hopper		\$165.54	\$178.00	\$12.46
3 Day – 1Day/1Park		\$157.17	\$169.00	\$11.83
3 Day Park Hopper		\$193.44	\$208.00	\$14.56
Valid January 7 – May 14, 2015				
Knott's Berry Farm Processing fee applies	Adult	\$35.00	\$62.00	\$27.00
	Child	\$26.00	\$33.00	\$7.00
Legoland - plus 2nd day free! 2nd visit must be used within 90 days	Adult	\$67.00	\$103.00	\$36.00
	Child	\$62.00	\$93.00	\$31.00
Legoland Hopper - plus 2nd day free!	Adult	\$72.00	\$127.00	\$55.00
	Child	\$67.00	\$117.00	\$50.00
Long Beach Aquarium of the Pacific	Adult	\$17.95	\$28.95	\$11.00
	Child	\$10.95	\$14.95	\$4.00
Long Beach Aquarium of the Pacific Family Annual Membership	General	\$115.00	\$125.00	\$10.00
Long Beach - Harbor Breeze Grey Whale and Sea Life Cruise	General	\$25.00	\$30.00	\$5.00
Sea World - Single Day	Adult	\$66.00	\$89.00	\$20.00
	Child	\$66.00	\$83.00	\$20.00
Sea World - 2015 Fun Card	Adult	\$80.00	\$89.00	\$6.00
	Child	\$80.00	\$83.00	\$6.00
Universal Studios - Buy a day, get 2 days free	General	\$79.00	\$92.00	\$13.00
Universal Studios Buy a day, get 2015 Free!	General	\$92.00	\$92.00	N/A
Universal Studios 12 months of unlimited fun! No Blackout Annual Pass	General	\$134.00	\$159.00	\$25.00

Tickets subject to availability/prices subject to change.

Knott's BERRY FARM®

© 2015 Cedar Fair, L.P. KB15-049

Voyage to the IRON REEF



SURFACING MAY 15TH



Regular
\$38
Gate Price \$65

Junior/Senior
\$31
Gate Price \$35



Purchase your discount tickets at:
Los Angeles Water & Power Employee Assn.
or log onto HR Web, Employpass Assn, E-tickets, Knott's.

LOS ANGELES WATER AND POWER EMPLOYEES' ASSOCIATION



TICKET ORDER FORM

- Prices and ticket availability are subject to change; please contact your Employees' Association office at (213) 367-3146 prior to mailing or faxing your order.
- All orders are sent via USPS Certified Mail.
- Members are responsible for money or tickets lost in the mail; however, insurance is available. For more information please contact your Association Office at (213) 367-3146.
- This order form is for tickets only. For merchandise, please use a mail runner or contact your Employees' Association at (213) 367-3146.

Member Name _____ Employee Number _____
 (Please Print CLEARLY)

Home Address _____

City _____ State _____ Zip _____

Home Phone _____ Work Phone _____

Sorry, no personal checks accepted! VISA MasterCard Money Order Cashier's Check

Card Account # _____ Expiration _____ 3-digit code _____

Name as it appears on the credit card _____

Signature _____ Date _____

ALL SALES ARE FINAL! NO REFUNDS OR EXCHANGES!

Item Description	Quantity	Unit Price	Total
_____	_____	\$ _____	\$ _____
_____	_____	\$ _____	\$ _____
_____	_____	\$ _____	\$ _____
_____	_____	\$ _____	\$ _____
_____	_____	\$ _____	\$ _____

(Office Use Only)
 Credit Authorization Code _____
 Mailing Date _____
 Processed By _____
 Tracking Number _____

Sub Total \$ _____
 Insurance _____
 (Optional) \$ _____
TOTAL \$ _____

111 N. Hope Street, Room A-17 Los Angeles, CA 90012 (213) 367-3146 Fax (213) 367-3286

Explore Your Inner Foodie!

Delight your palate and indulge in a journey of international flavors, delicious sustainable food, craft beer and wine. Plus, enjoy the sounds of live bands pulled straight from the local San Diego music scene.



CRAFT BEER • INTERNATIONAL CUISINE • WINE

Weekends May 2-24



© 2015 SeaWorld Parks & Entertainment, Inc. All rights reserved.

EMPLOYEES' ASSOCIATION BOARD OF DIRECTOR ELECTIONS

**Voting for Water and Power System
Employees' Association Board
Directors begins this month.
Please contact your timekeeper if you
have not received a ballot by May 15.
Here are your candidates.
PLEASE REMEMBER TO VOTE!!!**



NWANI, EHINOMEN
LADWP YEARS OF SERVICE: 9

I have worked for the Department in the Water System for 9 years as an Electrical Engineering Associate. I would like to be a member of the Association Board of Directors because I would like the opportunity to make a meaningful contribution to our Department family. I have volunteered in Department sponsored outreach programs such as the Adopt-A-School program as a reader. I hired and mentored young engineers, cultivating interest in a career at the Department. I am asking for your support so that I can use my skills and experiences to serve you.



TAGLE, JOAN ALEXANDRIA S.
LADWP YEARS OF SERVICE: 10

I am Joan Alexandria S. Tagle, Management Assistant for the Water Distribution Division. I humbly ask for your support, and the opportunity to represent the Water System as a Board Director for the LADWP Employees' Association.

I volunteered for the Water Employees' Club (WEC), as Vice President in 2009, and President in 2010, and currently am Recording Secretary for Los Angeles Filipino Association of City Employees (LAFACE).

I have a genuine interest in assisting coworkers, and creating positive, balanced work-life experiences. As Board Director, I will strive towards providing employees with a strong network of support within the workplace.



BALLESTERO, MARCOS R.

LADWP YEARS OF SERVICE: 1

I believe that chance to serve, even the chance simply to run, on the Board of Directors is a worthwhile opportunity. If elected, I will be granted the opportunity to learn from and participate directly with an organization, more importantly its people, which strives to provide so many excellent, and some might say well deserved, benefits to DWP employees. I hope that, as a relatively new employee, I can bring an open mindedness and willingness to the Board, and do my part to give back to my fellow employees.



SANTILLAN, ALBERT

LADWP YEARS OF SERVICE: 4

Hello my name is Albert Santillan, I'm seeking your vote because I want to be part of a people oriented organization, such as the Employees' Association. I want to help others in their time of need and be part of a team actively working to provide LADWP employees and retirees with a wide range of activities, services and benefits. I bring to this position the following; a listening ear, team work, and resourcefulness. In addition I enjoy meeting and working with people. I look forward to working with you.

Thank you
Albert Santillan



WILBUR, BRIAN

LADWP YEARS OF SERVICE: 28

As a member of the line series for 28 years, I have had the opportunity to work with some of the most dynamic groups of people the Department has to offer. In the past 5 years I have collaborated with the members of the Board of Directors for the Employees' Association, and have witnessed some of its successes. But there are many improvements that still need to be made. I believe that as a member of this Board of Directors, I can help to improve the programs within the Association and have a positive impact on its members.



WOODSON, MATT

LADWP YEARS OF SERVICE: 31

I am running for re-election to the Board of Directors of the Employees' Association to help support our Association's rich 80-year history of assisting current LADWP employees, retirees, and the Los Angeles community. I am currently an Executive Officer, serving as the Chief Financial Officer, and a member of the Donors' Welfare Plan Committee. I am motivated to help solve problems, provide leadership, improve employee benefits, and contribute to the future vision of the Association as part of the Board of Directors. Please consider me as your choice.



The choice is simple.

Choose the credit card that fits your payment style.

Our low-rate Platinum MasterCard is best if you carry a balance each month.

Or if you pay your balance off each month, choose Cash Rewards MasterCard and earn 1% cash rewards points with every purchase. No promotional periods, no points to redeem, and cash points you earn each year are automatically credited to your account each December.

What could be simpler than that!

- **Zero fees for balance transfers and cash advances.**
- Platinum MasterCard rate as low as 7.99% APR.
- **Simple 1x Cash Rewards MasterCard on all purchases.**
- No annual fee.

Apply online with promo code DWP MC, then use your card between May 1 and June 30. Your purchase may be paid for* by WPCCU! Details at wpcu.org/MC.



800-300-9728
wpcu.org

DWP EXCLUSIVE OFFER

When you apply* by 5/30/15 using promo code "DWP MC" You'll automatically receive a \$25 gas card after you make your first three purchases! Online or in branch.



*Some restrictions apply. Qualifying purchases less credits, returns or adjustments, and all cash rewards points earned during the year are automatically credited to the card account during the holiday season. For MasterCard rates, card Terms and Conditions, visit wpcu.org and click on credit cards. Visit wpcu.org for complete sweepstakes rules. One purchase will be chosen from all qualified entries each week, between May 1 and June 30, 2015 for reimbursement up to \$250.



Federally Insured by NCUA.

LADWP DISCOUNT OFFERS

Take advantage of your corporate discounts.



DISCOUNT CODE: 1459157
1 (800) 654-3131



ASSOCIATES ACCT: 097544-000
OR SHOW BADGE.



SECURE3.HILTON.COM/EN_US/Hi/
RESERVATION/BOOK.HTM?EXECUTION=E1S1
CODE: 3033846



DISCOUNT CODE: Z566497
1 (800) 527-0700



PICK UP YOUR 15% DISCOUNT
CARD AT YOUR EMPLOYEES' ASSOCIATION



AFFILIATE.MONTEREYBAYAQUARIUM.ORG
STORE NAME: LADWP1001



DISCOUNT CODE: 527660
1 (800) 354-2322



WWW.WIRELESS.ATT.COM/BUSINESS/
AUTHENTICATE/



WWW.VERIZONWIRELESS.COM/B2C/
EMPLOYEE/ELEULANDING.JSP



VISIT A LOCAL SPRINT STORE:
SPRINT.COM/STORELOCATOR
CALL: 866-639-8354
USE THIS CODE FOR THE SPRINT DISCOUNT
PROGRAM. CORPORATE ID: UTSCA_WCA_ZZZ

For more information, contact your Employees' Association office.
Due to seasonal discounts offered by rental companies, these corporate discount
programs may not provide the lowest rate available.

MINNIE'S MOTHER'S DAY BOOKMARK

LOOKING FOR A MOTHER'S DAY GIFT THAT'S PRACTICAL AND STYLISH? THIS ONE, FEATURING A CAMEO APPEARANCE BY MINNIE, IS SPOT ON!

WHAT YOU'LL NEED

Scissors
Cardstock or heavyweight craft paper (black, white, and red)
Glue stick
Paper hole punch
Red ribbon or cord
2 black beads



HOW TO MAKE IT

1. Print the template and use the pieces to cut out the shapes from the specified colors of cardstock.



2. Glue the white bookmark front atop the black back, centering it in place.



3. Glue a red letter M atop each of the black Ms. Then punch a series of random holes in each of the double-layer letters.



4. Glue the Ms and the Minnie Mouse head atop the bookmark, arranging them to spell the word MOM. The white card stock will show through the holes in the letters to create Minnie's signature polka-dots.

5. Punch a hole in the top of the bookmark, and thread a piece of red ribbon or cord through the hole. Slip a bead onto each ribbon end and tie a knot below it to keep it from sliding off.



For your Monterey Bay Aquarium PREFERRED TICKETING

Just follow these steps:

Step 1: Log onto <https://affiliate.montereybayaquarium.org>

Step 2: Enter the store name listed below in the Store login box.

Step 3: Pay for your tickets with Visa, Mastercard, American Express, or Discover and print your tickets in the convenience of your home.

Company:

Los Angeles Department of Water & Power

Store Name:

LADWP1001

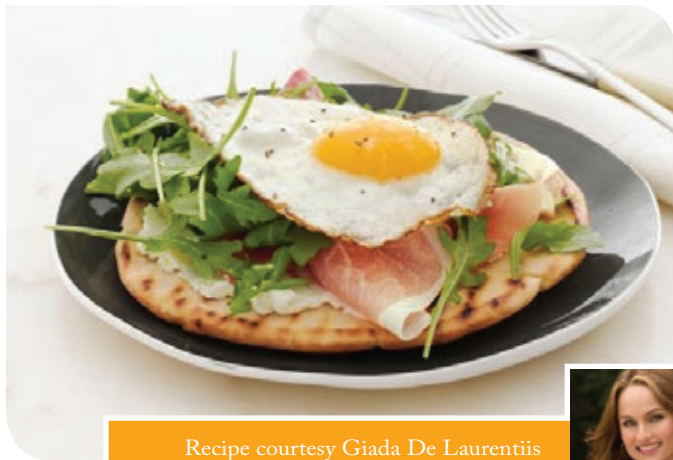
Website:

<https://affiliate.montereybayaquarium.org>

Company Contact:

213-367-3144

CRISPY BREAKFAST PITA



Recipe courtesy Giada De Laurentiis



WHAT YOU'LL NEED

- 6 6 -inch pita breads
- Extra-virgin olive oil
- 6 large eggs
- 3/4 cup (6 ounces) mascarpone cheese
- Grated zest of 1/2 large lemon
- Kosher salt and freshly ground black pepper
- 3 tablespoons fresh lemon juice
- 3 packed cups (3 ounces) arugula or baby spinach
- 8 ounces thinly sliced prosciutto

HOW TO MAKE IT

Heat a grill pan over medium-high heat or preheat a gas or charcoal grill. Brush each side of the pita breads with 1/2 teaspoon olive oil and grill 2 to 3 minutes on each side, until crisp. Remove from the grill and cool slightly.

In a large skillet, heat 1 tablespoon olive oil over medium-high heat. Crack the eggs directly into the pan and cook until the egg whites are set, 2 to 3 minutes.

Combine the mascarpone cheese, lemon zest, 1/2 teaspoon salt and 1/2 teaspoon pepper in a small bowl.

In a medium bowl, whisk together 3 tablespoons olive oil, the lemon juice, 1 teaspoon salt and 1/2 teaspoon pepper until smooth. Add the arugula and toss until coated.

Spread each pita with 2 tablespoons of the mascarpone mixture. Divide the prosciutto on top. Divide the arugula and mound on top of the prosciutto. Carefully place a fried egg on top of each pita. Season the eggs with a pinch of salt and pepper, and serve.

2015 METRO PRICES

REGULAR MONTHLY BUS PASS (ALL TAP ONLY)

DESCRIPTION	PRICE
Metro Monthly	\$100.00
Metro Zone 1	\$122.00
Metro Senior 62+/ Disabled/Medicare	\$20.00
Student K-12	\$24.00
College/Vocational	\$43.00



THE EZ TRANSIT PASS

The EZ Transit Pass is a regional transit pass accepted by up to 25 different transit agencies throughout Los Angeles County. Paper Passes Are Only Available for EZ Passes. The EZ transit pass is the only pass valid for unlimited local travel on the following lines:

- ANTELOPE VALLEY TRANSPORTATION AUTHORITY (AVTA)
- BALDWIN PARK TRANSIT
- BEACH CITIES TRANSIT
- BURBANK LOCAL TRANSIT
- CARSON CIRCUIT
- CITY COMMERCE
- COMPTON RENAISSANCE
- CULVER CITY MUNICIPAL BUS LINES
- FOOTHILL TRANSIT
- GARDENA MUNICIPAL BUS LINES
- GLENDALE BEELINE
- HUNTINGTON PARK COMBI
- LADOT (DASH AND COMMUTER EXPRESS)
- LAX
- LONG BEACH TRANSIT
- METRO BUS & METRO RAIL
- MONTEBELLO BUS LINES
- MONTEREY PARK SPIRIT BUS
- NORWALK TRANSIT
- PASADENA ARTS SHUTTLE
- PALOS VERDES TRANSIT
- SANTA CLARITA TRANSIT
- SANTA FE SPRINGS METROEXPRESS
- SANTA MONICA BIG BLUE BUS
- SOUTH PASADENA GOLD LINK
- TORRANCE TRANSIT
- WHITTIER TRANSIT



• DOES NOT ACCEPT METROLINK PASSENGERS



DESCRIPTION	PRICE	DESCRIPTION	PRICE
EZ Pass	\$110.00	EZ Zone P4	\$198
EZ Zone P1	\$132.00	EZ Zone P5	\$220.00
EZ Zone P2	\$154.00	EZ Sr.	\$61.00
EZ Zone P3	\$176.00	EZ Sr. Disabled	\$42.00

FOR MORE INFORMATION CALL (323) 466-3876
OR VISIT: www.metro.net

Stored value is also available.



Discover the June Keyes Penguin Habitat.



aquariumofpacific.org

To purchase your discount tickets, contact:
Employees' Association
(213) 367-3146

Adult Price \$19.95 (Regular price \$25.95) Child Price \$12.95 ages 3-11 (Regular price \$14.95)

562.590.3100 100 AQUARIUM WAY, LONG BEACH, CA 90802

RETIREMENT RECOGNITION PROGRAM

Did you know that your Employees' Association honors employees when they retire from the Department of Water and Power?

We do this to thank employees for their many years of service. It also reminds them that, upon retirement, they become lifetime members of the Employees' Association.

If you are planning an employee's farewell event, please notify our office and we will prepare a package that includes a framed certificate and a pen. If possible, a Board Director of the Employees' Association will present the certificate!

To order, e-mail Brittany Rios at least two weeks in advance at brittany.rios@ladwp.com

Note: If no request is received prior to retirement date, the Association will mail the certificate to the address on file.



**LOS ANGELES WATER AND POWER EMPLOYEES' ASSOCIATION
DISCOUNT SAFETY SHOE and EQUIPMENT PROGRAM**

LADWP employees assigned to a position requiring safety shoes or equipment may participate in this program. The vendors listed below provide discounted pricing for the purchase of safety shoes and equipment that can then be repaid in three convenient payroll deductions.

Guidelines:

- ◆ Your supervisor must complete an authorization form allowing you to purchase shoes under this program. An application provided by you or the vendor must also be completed at the time of purchase to authorize automatic payroll deduction.
- ◆ A maximum of two pairs of safety shoes can be purchased in any twelve month period.
- ◆ Twelve pairs of socks may be purchased along with each shoe purchase, up to a limit of twenty-four pairs in any twelve month period.
- ◆ Please check with your supervisor for a list of program approved equipment.

Discounted footwear is available through the following vendors:

Industrial Safety Shoe

Huntington Park	(323) 587-0293
Santa Ana	(714) 796-1976
Walnut	(909) 594-1203
Wilmington	(310) 549-6469

Shoeteria

Anaheim	(714) 776-7299
Commerce	(323) 948-5800
La Puente	(626) 336-4560
Norwalk	(562) 864-4422
Ontario Mills	(909) 980-0977
Torrance	(310) 921-9811

Red Wing Shoe Stores

Burbank	(818) 842-4910
Commerce	(323) 721-9222
Covina	(626) 966-3114
Culver City	(310) 839-3271
Westminster	(714) 898-1106

El Monte	(626) 444-8111
Fontana	(909) 823-0042
Lancaster	(661) 949-0898
Las Vegas	(702) 598-0223
Long Beach	(562) 426-6898
Norwalk	(562) 864-2411
Pasadena	(626) 792-9181
Santa Clarita	(661) 799-7710
Torrance	(310) 371-5068
Upland	(909) 931-4018
Whittier	(562) 695-1612

Sun's Red Wing Shoe Stores

Los Angeles	(213) 625-8246
-------------	----------------

Work Boot Warehouse

Canoga Park	(818) 703-8498
Newhall	(661) 259-1978
North Hollywood	(818) 753-8747
San Bernardino	(909) 890-2590

WorkWear Express

Granada Hills	(818) 831-9675
---------------	----------------

Equipment is available from the following vendor:

Kathco Products
6090 Triangle Drive
City of Commerce, CA 90040
(323) 728-1030

For additional questions regarding this program, please contact:
Jacquie Mendez at (213) 36-73163

SAFETY SHOE SUPERVISOR AUTHORIZATION FORM

**Los Angeles Water and Power
EMPLOYEES' ASSOCIATION, INC.**

111 N. Hope Street, Room A-17 Los Angeles, CA 90012-2694

Phone: (213) 367-3146 Fax: (213) 367-3286

Supervisor Authorization Form

Exempt Permanent

_____ is a participant in the Employees' Association
(print employee's name clearly)
Safety Shoe Program. Please only provide the type of safety shoe identified by the supervisor below.

I, _____ am the supervisor of the requesting employee, and
(Print supervisor's name clearly)

have reviewed their work conditions. It has been determined that the work conditions do require foot protection.
{OSHA 3385: "Appropriate foot protection shall be required for employees who are exposed to foot injuries from electrical hazards, hot, corrosive, poisonous substances, falling objects, crushing or penetrating actions, which may cause injuries or who are required to work in abnormally wet locations.}

The following safety shoe is adequate for these working conditions:
{**Supervisor initials only one type of safety shoe that the employee is authorized to purchase. Initialing two (2) types invalidates the request.**}

ASTM F2413-05 Standard Specification for Performance Requirements for Foot Protection and meet ASTM F2412-05 Standard Test Methods for foot protection. (Initial one)

- _____ Non-protective toe safety work shoes\boots that meet ASTM F2413-05
- _____ Protective reinforced toe safety work shoes\boots that meet ASTM F2413-05
- _____ Climbing boots that meet ASTM F2413-05

(Signed by supervisor in blue ink) Date: _____

Shoe vendors only:

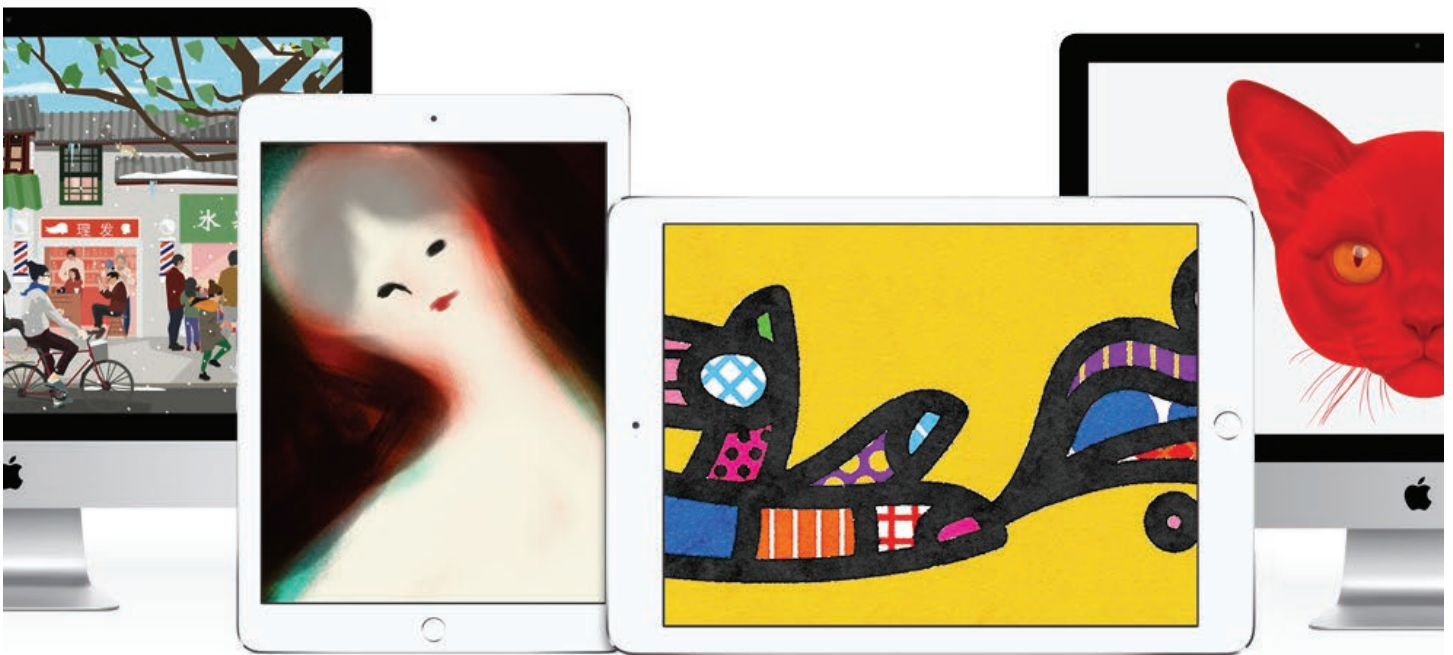
Only one shoe type can be initialed. If there are two (2) or more types initialed this form is invalid and the request will be denied.

- This letter indemnifies the shoe store from liability for the above named employee only
- The form is only good for one purchase of (two pair maximum) safety shoes per year
- Modified or duplicated documents are not acceptable (whiteout, change of name, etc.)
- Purchase receipt must be dated within 30 calendar days of date of supervisor's approval
- Only one purchaser may use this document
- You must submit this document with all other paperwork when requesting reimbursement

WE WILL NOT PAY INVOICES WITHOUT THIS DOCUMENT ATTACHED

Exclusive savings from Apple. Start something new.

We believe in the power of creativity. That every act of imagination makes the world a more interesting place. So this year, take that first step. Then take another one. Because when you start with amazing products, you can create amazing things.



To place your order, visit [hrweb](#) and click on the Apple Corporate Discount Program or call 800-MY-APPLE.



Free shipping.
Get free ground shipping on all orders.



Questions? Just ask.
Call 800-MY-APPLE to talk to a knowledgeable Apple Specialist.



Great ways to make Apple products more affordable than ever.
Apply at checkout for a monthly payment plan with PayPal Credit or apply for special financing with a Barclaycard credit card.

Please identify yourself as an eligible participant purchasing from the Apple Employee/Member Purchase Program when calling Apple. Some products or promotions are not available outside the U.S. Product specifications are subject to change. TM and © 2015 Apple Inc. All rights reserved.

SHARE YOUR STORY

WRITE IT OR WE'LL WRITE FOR YOU!

Would you like to contribute a story for publication in this column? Perhaps you like to travel, have an interesting hobby, do volunteer work, have an exciting job, have an interesting family/work story to share. Do you have an inspirational thought or passion? Whatever the story, we would love to tell it!

We can arrange to have someone interview you and write the article. If you prefer, write us 250 words or less that comply with City of Los Angeles guidelines. The deadline for submission is six weeks in advance of publication. For example, May 15 is the July issue deadline. Remember, the editor reserves the right to reject inappropriate material.

Submit your ad to Yvonne Hernandez, Association Report Editor at yvonne.hernandez@ladwp.com, or call her at (213) 367-3144.



CLASSIFIED ADVERTISING

LOS ANGELES WATER AND POWER EMPLOYEES' ASSOCIATION REPORT

GUIDELINES:

Only Employees or Retirees May Submit Ads
Please do not submit ads for relatives, friends, or neighbors.

No Charge on Free Ads of Twenty-five (25) Words and Under
A 25¢ charge applies to each word over the limit.

One Free Ad Per Publication for Items such as, Automobiles, Furniture, Electronic Equipment
You may submit one free ad per publication for most items and non-business services and those categories noted below.
There is no limit on the number of paid ads.

Ads Must Renew Every Month
Continuous advertising requires the completion of a new application each month.

Paid Ads Include Rental Property, Real Estate, Services, Fundraisers
\$10 per ad, up to twenty-five (25) words, plus 0.25¢ each word over twenty-five (25)

Ads Must Be Legitimate
Our review committee reserves the right to refuse or limit the publication of any advertisement.

All Application Information Must Be Complete and Legible

Place only Your Name Within the Ad
Your name must appear in the ad and you must be listed as the contact person.

Ads Must Include a Non-LADWP Contact Number With Area Code

Deadline to Submit Ads is the First Day of Each Month for the Following Months Publication

	Fee		Fee		Fee
COMMUTER	<input type="checkbox"/> Free	RENTAL PROPERTY	<input type="checkbox"/> \$10.00	FUND-RAISER	<input type="checkbox"/> \$10.00
TRANSPORTATION	<input type="checkbox"/> Free	REAL ESTATE (No Agents)	<input type="checkbox"/> \$10.00	MISCELLANEOUS	<input type="checkbox"/> Free
WANTED	<input type="checkbox"/> Free	OVER 25 WORDS	<input type="checkbox"/> \$_____		

NAME _____ EMP. # _____ WORK PHONE _____

IF RETIREE, HOME PHONE # _____ ADDRESS _____

SIGNATURE _____ DATE _____

Please type or print your ad **exactly** the way you want it to appear: (Including contact name & phone number)

Send application to:
Los Angeles Water and Power Employees' Association
General Office Building, 111 N. Hope Street, Room A-17
Los Angeles, CA 90012
(213) 367-3146

For Office Use Only

Approved for Month of: _____

Fee received: \$ _____

Place time stamp here



Up to 40% Savings!

\$15 Unlimited Ride Passes available through DWP

LA'S ONLY ADMISSION-FREE AMUSEMENT PARK



- 12 Exciting Rides ■ Fun Midway Games
- Great Food & Entertainment
- Birthday Packages ■ Plenty of Parking

 /pacificpark
  @pacpark
  /pacpark
  /pacpark

(310) 260-8744 pacpark.com

380 Santa Monica Pier, 90401

©2013 Santa Monica Amusements. All rights reserved.

NOTARY SERVICES

Available in your Employees' Association Office, Room A17

* Must Present Acceptable Identification

ACCEPTABLE IDENTIFICATION

- ✓ Current driver's license or non-driver's identification card issued by the California Department of Motor Vehicles, or a driver's license officially issued in Mexico or Canada
 - * An expired California driver's license is acceptable only with a current extension card
- ✓ U.S. Passport or Foreign Passport stamped by the U.S. Immigration & Naturalization Service (INS)
- ✓ U.S. Military ID
- ✓ Resident Alien ID or "Green Card" issued by the INS (only for notarization of INS forms)

UNACCEPTABLE IDENTIFICATION

- ✓ Employee or Retiree badge/card
- ✓ Temporary driver's licenses (even if issued by DMV)
- ✓ Credit Cards
- ✓ Driver's licenses without photographs
- ✓ Social Security Card

Only \$5.00 per signature

CALL FOR AN APPOINTMENT

Jessica Sorino (213) 367-3143 or Jacquie Mendez (213) 367-3163

THE CLASSIFIEDS

Are you looking for more riders for your vanpool or would you like to sell your car? Advertise in the Association Report!

For more information contact Yvonne Hernandez at (213) 367-3144.

VANPOOLS

SHARE THE RIDE! JOIN A VANPOOL, CARPOOL OR SIGN UP FOR TRANSIT AND RECEIVE A MONTHLY SUBSIDY. VISIT THE CARS OFFICE (JFB, A-16) FOR MORE INFORMATION!

VANPOOL #44: Needs drivers/riders from Rialto, Fontana, Rancho Cucamonga, to Main St. Work hours 6:00 a.m. – 3:30 p.m./5 day a week. Call Antonio Daisley at ext. 77569 or (213) 792-8902

VANPOOL #112: Looking for new riders from Palmdale/Lancaster area to JFB 9/80 schedule – 6:30 a.m. to 4:00 p.m. Contact: Bruce Collins (213) 367-5914 or bruce.collins@ladwp.com

VANPOOL DRIVER/RIDER NEEDED: Vanpool #159 From Cerritos to JFB. Work schedule: 6:30 a.m. – 4:15 p.m. Cost \$52/month. Contact Louie Ferrer at ext.75244

DRIVERS ONLY VANPOOL #12: Two seats available, 6:00 a.m. – 3:30 p.m. start and end times. 1st Friday ASDO and 2nd Friday short day. Leave 5:20 a.m. from W. Covina Church parking lot. Arrive at JFB at 5:45 a.m., 2nd stop Temple Street by 6:00 a.m. Contact Bill Wright 792-5715.

VANPOOL #52: Needs drivers/riders. West Covina, CA to JFB. Van runs 5 days a week. 6:30 a.m. – 4:00 p.m. work shift. Call Daisy 74121 or Beth 70175.

NEED NEW RIDERS: From Simi Valley to Van Nuys Service Center: Arrive @ 6:00 a.m.; Leave @ 4:00 p.m.; 3 month old 8 passenger van. Contact Gary Hulsey (818) 771-4139

CARPPOOL: From Cerritos to JFB. 183rd and Carmenita, 6:30 a.m. – 4:15 p.m.. Use our own car. Contact Hugh (213) 367-0851

CARPPOOL: From Lancaster to Northridge Yard. 9/80 schedule. We use our own car. Contact: Stella (818) 744-7169

TRANSPORTATION

2006 TOYOTA SIENNA XLE LIMITED: 120k miles, see ad on autotrader.com at Car ID: AT-15fedc5d \$1,000 discount for DWP employee. Contact: Del (661) 269-1093.

2003 HARLEY "ROAD KING": 100th Anniversary; 5,080 miles, Stage I with detachable windshield and passenger back brace, hard bags, battery charger, black and chrome. \$1,500 OBO Contact: John (818) 366-3273.

FOR SALE: 2013 Triumph Thruxton. Brookland green. 3k miles \$8,499 OBO Contact: Paul (702) 332-5088.

FOR SALE: 2007 Montana 5th wheel for sale. Clean! Two pop-outs, king bed, loaded. Call for pictures. \$17,000 (760) 920-7181 Lisa

MISCELLANEOUS

DODGER TICKETS FOR SALE: Reserve Level Section 23, Row "P", Seats 21-22. Left Field Pavilion Row "A" Seats 14-15. Call David (562) 413-7411.

RENTAL PROPERTY

FOR RENT: Beautiful 2 bedroom, 2 bath condominium upper scale San Diego Rancho Bernardo, Resort Style. Close to everything: Shopping, Fwys, Schools, Theme Parks, Beach, Etc. Contact Lourdes (909) 226-6775 or lulasellproperties@live.com

SERVICES

AA CIVIC CENTER PARTICIPATION: Meeting every Thursday at 4:30 p.m. and Fridays at 12:00 p.m. at JFB, room A-18A. Contact: Ricardo (323) 660-9035

WANTED

WANTED: Box Tops for education. Please send to Nancy Fairbanks at 14401 Saticoy St, Building 3. Thanks

TOASTMASTERS INTERNATIONAL: Water and Power Toastmasters Meet Every Wednesday 12:00-1:00 in Room 1171 and last Wednesday in room 1471. Contact: Kawana (213) 367-3639 www.toastmasters.org



Special ONLINE pricing for DWP Employees*

immediate FAMILY
A New American Play

BY PAUL OAKLEY STOVALL
DIRECTED BY PHYLICIA RASHAD

Apr 22 – Jun 7, 2015

MARK TAPER FORUM AT THE MUSIC CENTER | CenterTheatreGroup.org/HydePark*

Roald Dahl's
Matilda
THE MUSICAL

May 29 – Jul 12, 2015

AHMANSON THEATRE AT THE MUSIC CENTER | CenterTheatreGroup/Revolting*

TICKETS MUST BE PURCHASED ONLINE TO RECEIVE THE EXCLUSIVE DWP PRICING.



Center Theatre Group
L.A.'s Theatre Company



Premiere Super Saver Movie Ticket

ADMIT ONE



REGAL

ENTERTAINMENT

G R O U P



EDWARDS
THEATRES

Visit www.REGmovies.com for showtimes and locations.

TICKETS ARE AVAILABLE AT THE EMPLOYEES' ASSOCIATION

CATALINA ISLAND

It's just an hour boat ride away. Go for the day or an overnight stay. Enjoy the abundance of island activities including kayaking, snorkeling and parasailing, or hiking, biking and tours to explore the island's interior beauty.

- Up to 30 daily departures from Long Beach, San Pedro, or Dana Point
- Airline Style Seating for outstanding comfort
- The fastest fleet of boats



Discount Tickets available in Employee Store

Advance purchase required. Restrictions apply.

Discount not available at terminal.

No refunds or exchanges. For more

information call 562-485-3300 or

visit CatalinaExpress.com



The Law Office of Michelle S. Short-Nagel, Esq

(Former DWP Employee)

- Divorce & Paternity Issues
- Child Custody Matters
- Child & Spousal Support
Modifications
(Former Child Support Services D.A.)

- Free Consultation And Reduced
Rates For DWP Employees

5900 Sepulveda Blvd., Suite 400, Sherman Oaks, CA 91411

Phone: (818) 376-7500 Fax: (818) 376-7555

Also Available for Criminal Matters & DUI



Some
decisions
are too
important
to wait...

So don't.

- Wills
- Trusts
- Estate Planning
- Probate
- Power of Attorney
- Free Consultation
And Reduced Rates
For DWP Family
And Friends



The
Law Office
of
Julie Clary

**21112 Ventura Blvd.
Woodland Hills, CA 91364
(818) 884-9700**

Please come visit us at:
www.ClaryLaw.net

IN MEMORIAM

Your Employees' Association regrets to announce the passing of the following active and retired employees:

Retired:

Jack J. Altmark	03/13/2015	Wayne E. Huff	03/05/2015	Gerald E. Ransom	03/04/2015
Charles F. Cave	02/21/2015	John B. Jones	02/28/2015	Ernesto B. Reyes	03/08/2015
Albert Costa	02/27/2015	William L. Kingston	03/07/2015	Clarence J. Rickerl	03/25/2015
David H. Ellithorpe	03/23/2015	Billy N. Lewis	03/11/2015	Masao Uraguchi	02/24/2015
Roger D. Emory	03/21/2015	Joanne Nicholson	03/08/2015	Augustin Vasquez	02/09/2015
Lester Gover	03/20/2015	Dale K. Parke	03/22/2015	Ray D. Wheeler	03/26/2015
Charles Gross, Jr.	03/22/2015	Lee E. Peugh	03/04/2015	Larry Young	02/16/2015
Robert D. Haw	03/09/2015	Anthony J. Polizzi	03/13/2015	Albert T. Zones	02/20/2015
George P. Hensley	03/07/2015	Dorothy M. Poulsen	02/19/2015		

DRAWING WINNERS FOR

**MARCH
2015**

Lourdes Zerrudo

Celso Cardano

Dorothy Anders

Jose Sanchez

Here's How You Can Be Our Next Winner:

- 1st - Make any purchase from the Employees' Association Office or your Association Representative.
- 2nd - Write your name and phone extension on a raffle ticket (1 per \$ 20.00 purchase). Drop in the raffle box or give to your Association representative.
- 3rd - At the beginning of every month a drawing is held from all raffle tickets turned in for the previous month.
- 4th - Show Department identification for your prize.
- 5th - You have 2 weeks to claim your prize!

It's That Simple.....

**Employees'
Association Report
Is Now Available Online**

**Visit Our Intranet
Home Page**

<http://hrweb>

**Click on:
Employees' Association**

Don't miss this chance for discounts on health and wellness services!

Colonial Life[®]

We are pleased to offer LADWP employees a free WellCard discount card.

Schedule a 1-to-1 benefits counseling session to receive your card and start enjoying discounts!

The Wellcard discount card can save you and your family money on:

- Doctor office visits
- Prescription drugs
- Dental, vision and hearing products and services
- Lab work, MRIs and X-rays

It also provides access to the following programs including:

- 24/7/365 doctor telephone consult
- Medical bill help
- Free online health library
- Cash rewards mall and more!

During your 1-to-1 session, your benefits counselor can also review your benefits and the Colonial Life coverages available:

- Accident insurance
- Disability insurance
- Hospital Confinement Indemnity insurance
- Cancer insurance
- Critical Illness insurance
- Life insurance

The Wellcard discount program is powered by AccessOne Consumer Health, Inc., 84 Villa Rd, Greenville, S.C. 29615, www.accessonedmpo.com. This is not a Part D Medicare prescription drug program. This is not insurance and is not intended to replace insurance. Discounts are only available at participating pharmacies and providers. Payment must be made at the time of service to receive discounts from participating providers. Void where prohibited by law.



Schedule your 1-to-1 today to receive your Wellcard and ensure you have the benefits coverage you need.

- **Mario Houston**
Mario.Houston@coloniallife.com
818-681-7614 – Ca Lic#0C25151
- **Terry Hunt**
Terry.Hunt@coloniallife.com
310-855-4099 – Ca Lic#0G28748
- **Vivica Keyes**
Vivica.Keyes@coloniallife.com
310-850-0587 – Ca Lic#0E65887
- **Maria Johnson**
Maria.Johnson@coloniallife.com
714-785-1247 – Ca Lic#0C98727
- **Robert Spearman**
Robert.Spearman@coloniallife.com
310-346-5291 – Ca Lic# 0D23078
- **Shari Rosemblat**
Shari.Rosemblat@coloniallife.com
323-933-2522 – Ca Lic# 0C03059
- **Marsha Dansby**
Marsha.Dansby@coloniallife.com
626-712-5834 – Ca Lic#0D55903

© 2013 Colonial Life & Accident Insurance Company
Colonial Life products are underwritten by Colonial Life & Accident Insurance Company, for which Colonial Life is the marketing brand.



Studio Tour



TRANSFORMERS™: The Ride-3D



King Kong 360 3-D



Despicable Me Minion Mayhem

GET READY FOR THE ULTIMATE HOLLYWOOD MOVIE EXPERIENCE!

DWP

PRIVATE EVENT*

Saturday, May 9th, 2015

3pm – Midnight

(Park entry permitted starting at 3pm)

(Exclusive event 8pm – midnight)

**Tickets must be purchased online in advance
(\$66 per person)**

BUY NOW! TICKETS LIMITED!

FREE GENERAL PARKING INCLUDED WITH YOUR TICKET

All rides and attractions are available during daytime operation and private event*

Last Studio Tour Tram departs at 10:30pm

Select food and retail locations will remain open during private event

Shows only available during daytime operation

**For more details and to purchase tickets online:
ushtix.com/DWP**



*All rides, shows and attractions availability subject to change without notice. This event is held in conjunction with other select companies. TRANSFORMERS and all related characters are trademarks of Hasbro and are used with permission. © 2015 Hasbro. All Rights Reserved. © 2015 DreamWorks, LLC and Paramount Pictures Corporation. All Rights Reserved. ©2015 Universal Studios. All Rights Reserved. 15-CON-16145 A Division of NBCUniversal